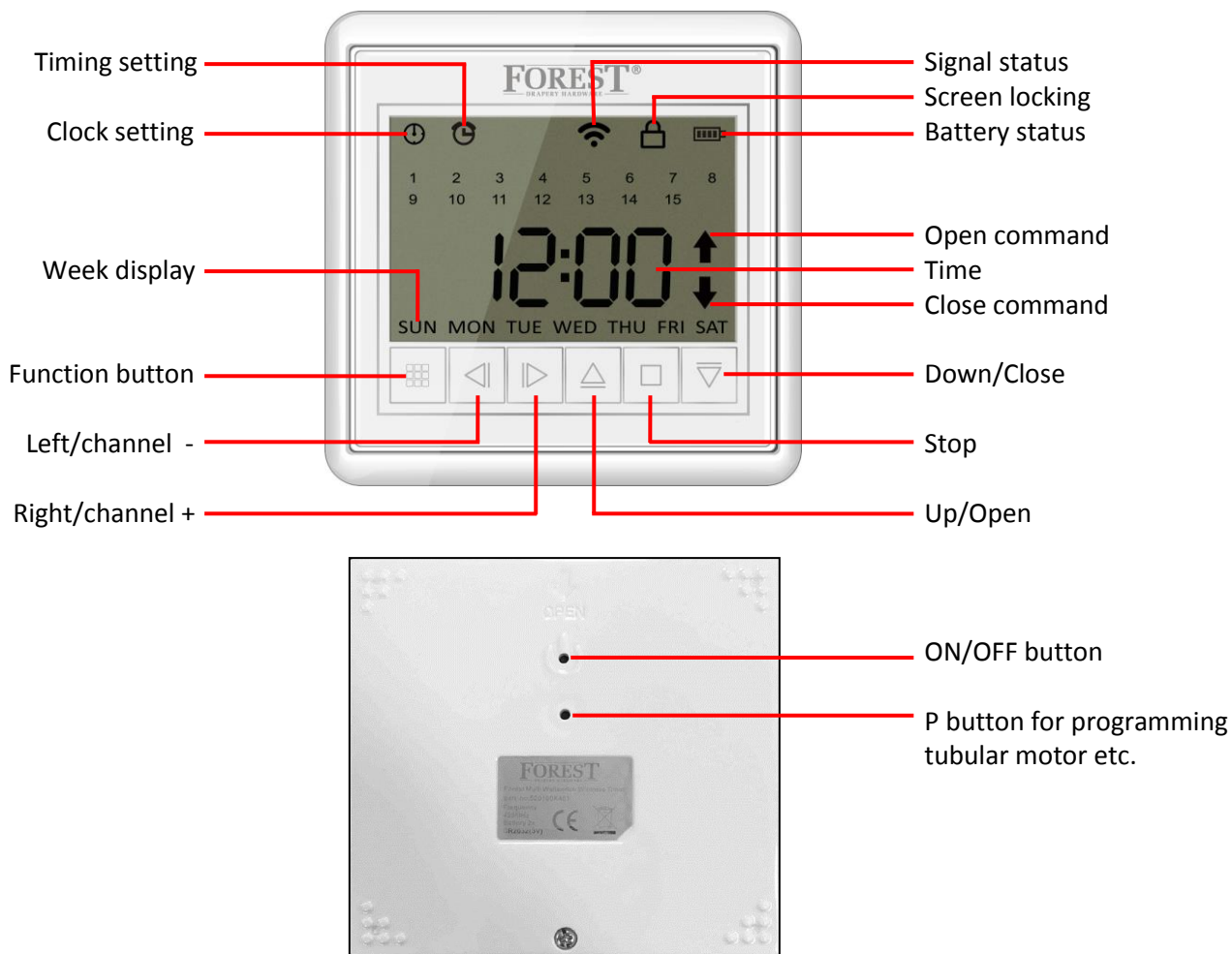
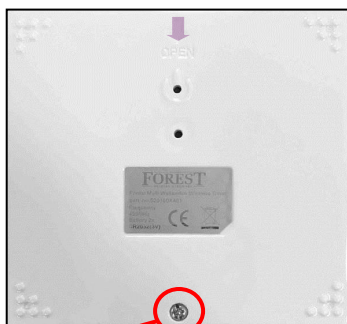


TECHNICAL SPECIFICATION:

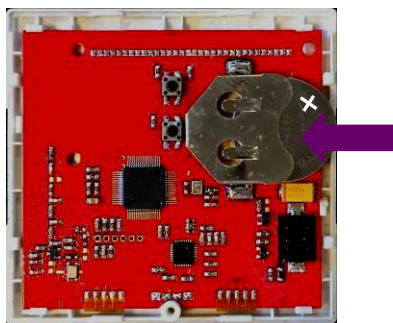
- 3V battery type 1x CR2430
- battery life < 2 years
- frequency 433.92MHz
- touch screen
- max. 8 timing points for opening or closing
- transmit range indoor max. 30mtr
- working temperature -10°C - +50°C
- transmit power max. 10mW
- magnetic wall bracket
- white - 5201001481 black – 5201006481



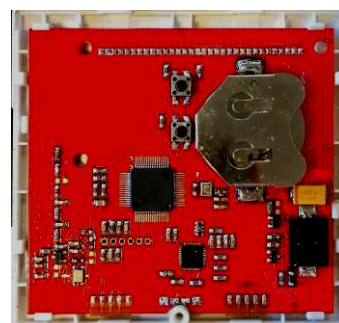
INSERT BATTERY



unscrew the back side of the housing and slide the cover downwards



put in the battery mind the right polarity



WHEN BATTERY IS EMPTY:

After replacing the battery, the programmed receivers and motors will still function as normal. Also the timing points will stay in the memory, only the running clock must be adjusted. Please follow the local regulations for disposal of the empty battery.

PROGRAM THE WIRELESS TIMER TO A SHUTTLE MOTOR

The Shuttle motor doesn't respond to the wireless timer when the end limits of the motor are not set. Please check by moving the curtain close and open by hand. Program a channel to a Shuttle motor:

PRESS BUTTON FOR 4 SEC. TO UNLOCK



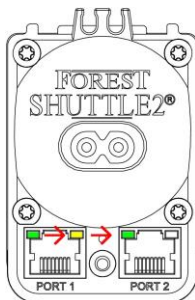
SELECT DESIRED CHANNEL

PRESS BUTTON 3x WITH A PIN

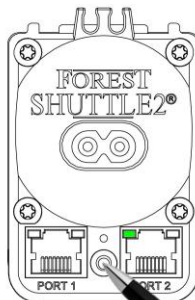


3x

LED MOVES FROM 1^e → 2^e → 3^e LED



KEEP BUTTON PRESSED FOR 5 SEC.



1x long

GREEN LED STARTS BLINKING



PRESS OPEN WITHIN 10 SEC.



SET TIME AND DAY



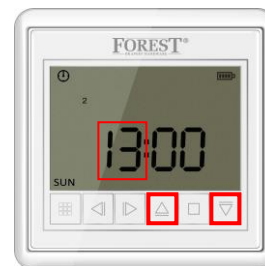
press 4 sec. to unlock



press again for 4 sec.



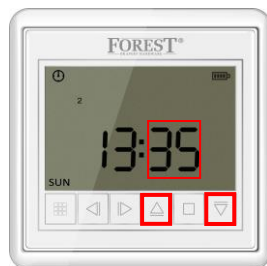
press stop button



change hours ^ or v



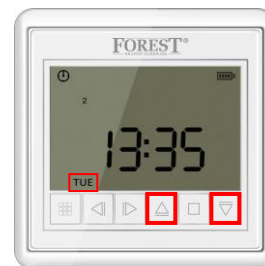
press > button



change minutes ^ or v



press > button



change day ^ or v

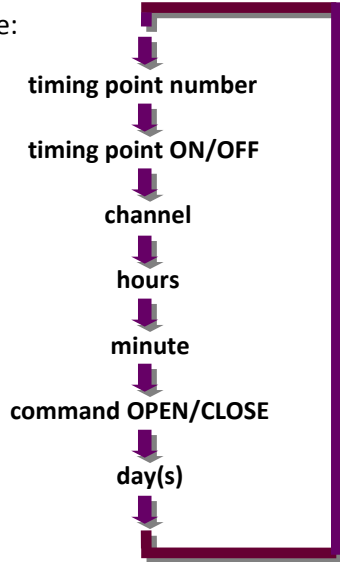


press button for 4 sec. to save

SET TIMING POINTS

Up to 8 timing points can be set to this device. Each timing point can transmit an OPEN or CLOSE command.

Menu item tree:



default:

- 1
- OFF
- ALL (channel 1 to 15)
- 12:
- :00
- OPEN
- ALL (Sun,Mon,Tue,Wed,Thu,Fri,Sat)

Use the < and > buttons to select in following order.
Use the UP (^), STOP (□) or DOWN (∇) buttons to change the selected item

enter timing point setting:

press 4 sec. to unlock

press again for 4 sec.

press > button to select timer menu

press stop button to enter timing point setting

select timing point number

change to desired timing point 1....8

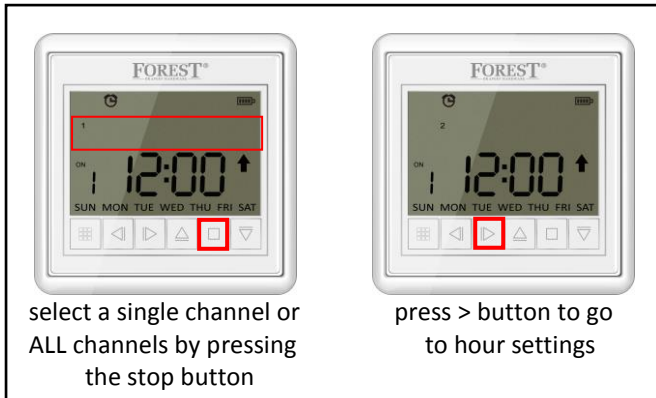
press > button to go to next step

switch ON/OFF

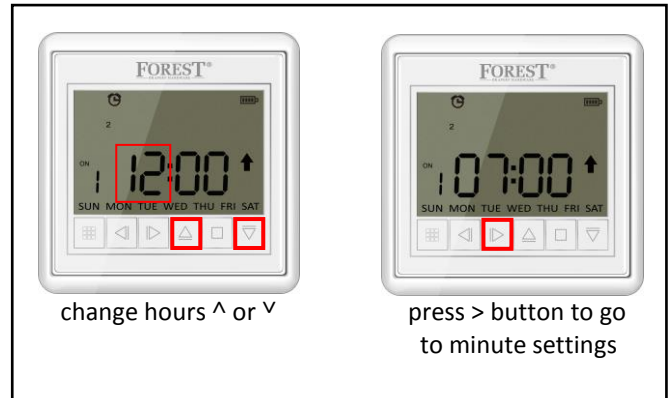
turn ON timing point ^ (or OFF ∇)

press > button to go to next step

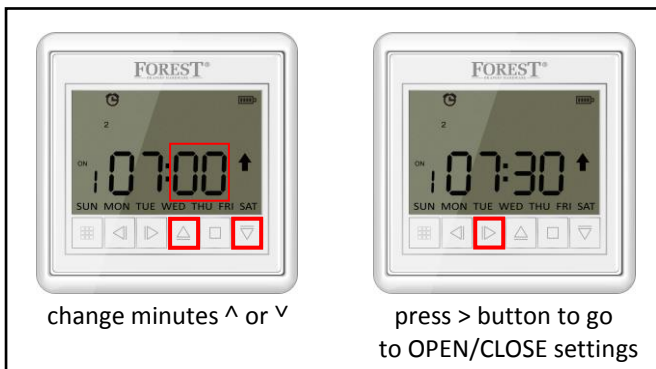
select channel



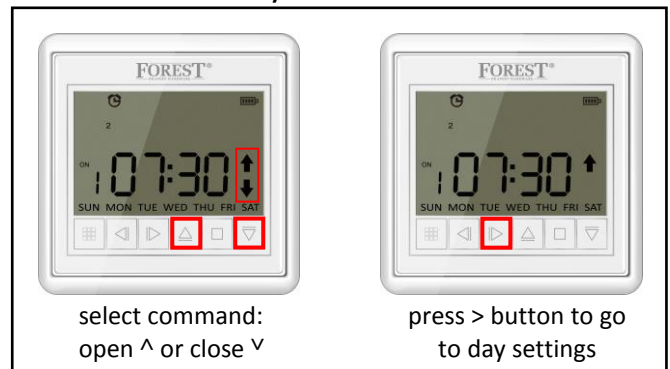
set hours



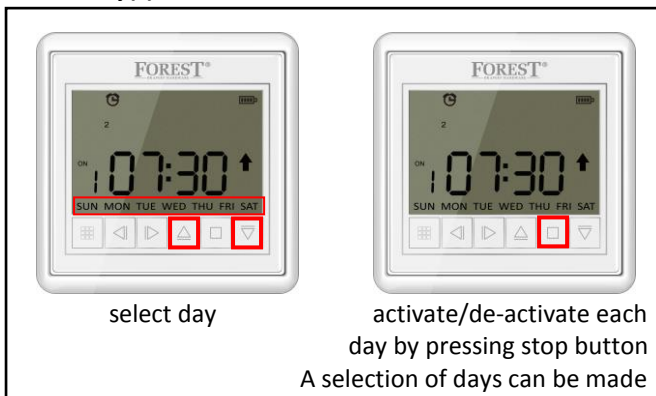
set minutes



set command OPEN/CLOSE



set day(s)



save and exit



how to make a motor group:

Maximum of 8 timing points can be made for opening or closing by timer.

Example:

3 curtain tracks, track A, B and C. Track A → channel 1, track B → channel 2, track C → channel 3.

All 3 tracks are also programmed to channel 4. This is the group-channel.

Timing point 1 is set to Open at 7AM, channel 4, Mon, Tue, Wed, Thu, Friday.

Timing point 2 is set to Close at 19PM, channel 4, Mon, Tue, Wed, Thu, Friday.

Timing point 3 is set to Open at 9AM, channel 4, Sat, Sunday.

Timing point 4 is set to Close at 20PM, channel 4, Sat, Sunday.

Individual manual control: use channel 1, 2 or 3.

Automatic opening and closing:

- Mon, Tue, Wed, Thu, Friday: Open 7AM, Close 19PM, track A, B and C
- Sat, Sunday: Open 9AM, Close 20PM, track A, B and C