

TECHNICAL SPECIFICATION:

- 24Vdc, 16Watt
- nom. 0.8Nm – max. 1.0Nm
- 34 rpm
- max. running time 7 min.
- max. curtain weight 4 kg
- max. 5 cord rolls
- has to be used with Multi remote, Multi wall switch RF (LED) and/or Diamond remote
- only to be used in Forest BS system and with Forest power supply for BS motor



WARNING: WHEN USING THE QUICK LOCK CORD ROLL, BE SURE TO LOCK THE CORD BEFORE USING THE MOTOR

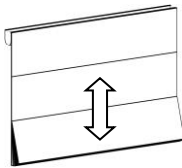
PROGRAMMING REMOTE TO BS MOTOR

first select the desired channel

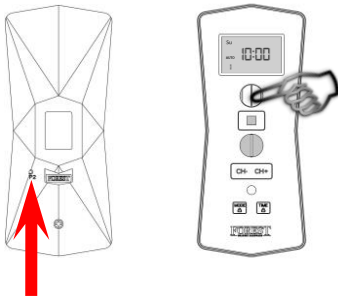
switch on power to the motor:



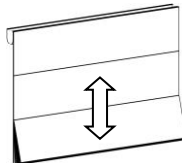
motor will jog to acknowledge:



within 10 seconds after jog, press P button and press open button on remote, one one after the other



motor will jog to acknowledge:



NOTE: repeat this procedure to program a 2nd or 3rd remote/wall switch to the BS motor

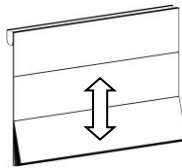
REMOVE PROGRAMMED CHANNEL

first select the desired channel

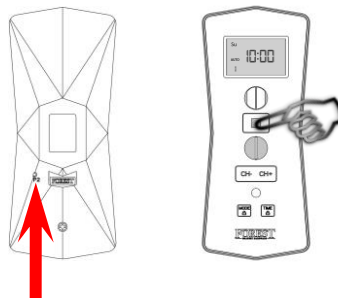
switch on power to the motor:



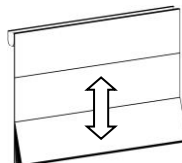
motor will jog to acknowledge:



within 10 seconds after jog, press P button and press STOP button on remote



motor will jog to acknowledge:



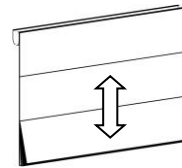
CHANGE MOTOR DIRECTION

first select the desired channel

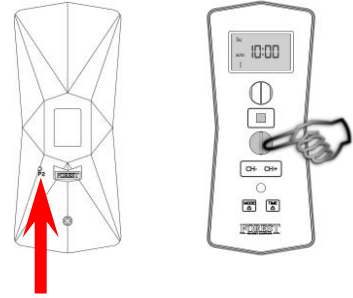
switch on power to the motor:



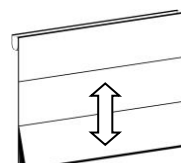
motor will jog to acknowledge:



within 10 seconds after jog, press P button and press CLOSE button on remote



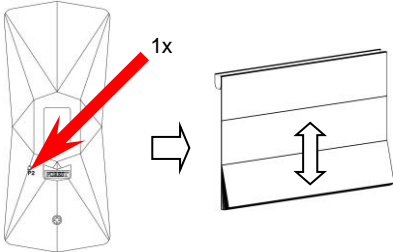
motor will jog to acknowledge:



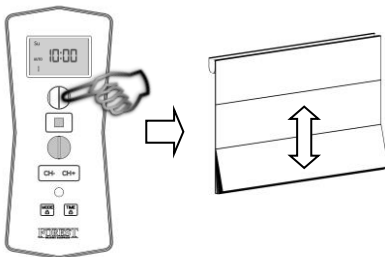
NOTE: if you need to start over, switch off the power and wait at least 20 seconds before switching on the power

SET UPPER END LIMIT

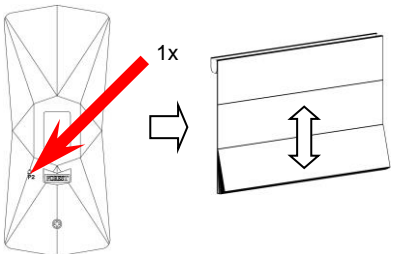
press P2 button once,
motor will jog to acknowledge:



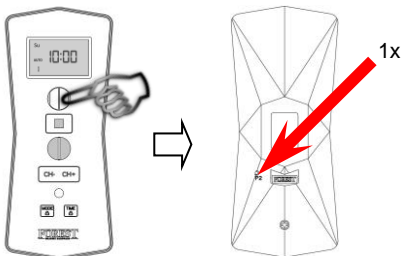
press OPEN button on remote,
motor will jog to acknowledge:



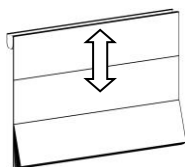
press P2 button once,
motor will jog to acknowledge:



adjust desired upper end limit and
press P2 to save the upper limit:

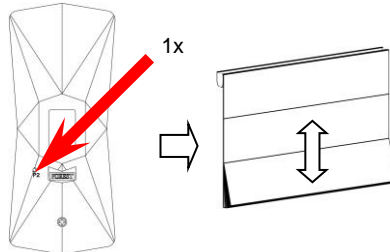


motor will jog to acknowledge:

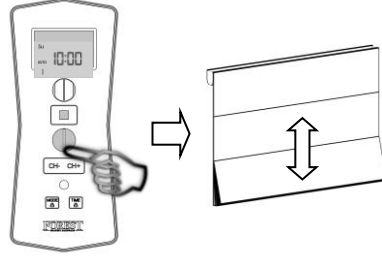


SET LOWER END LIMIT

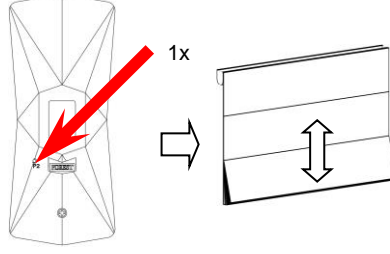
press P2 button once,
motor will jog to acknowledge:



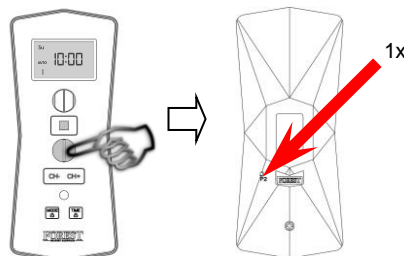
press CLOSE button on remote,
motor will jog to acknowledge:



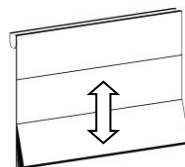
press P2 button once,
motor will jog to acknowledge:



adjust desired lower end limit and
press P2 to save the lower limit:

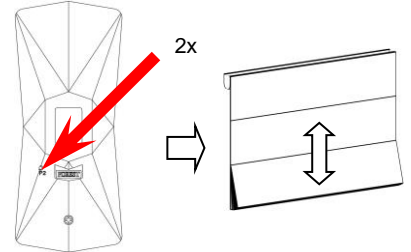


motor will jog to acknowledge:

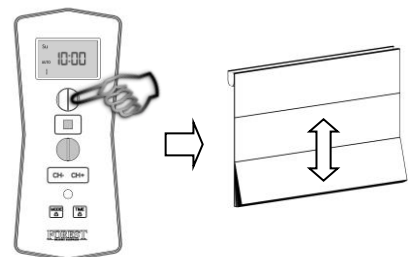


DELETE LIMITS

press P2 button twice,
motor will jog to acknowledge:

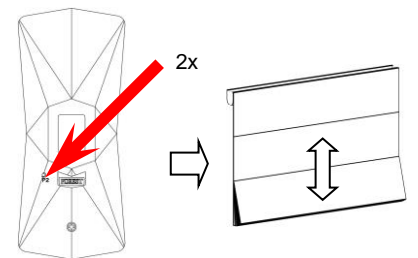


press OPEN button on remote,
motor will jog to acknowledge:



DELETE ALL MEMORY

press P2 button twice
motor will jog to acknowledge:



press CLOSE button on remote,
motor will jog twice to acknowledge

