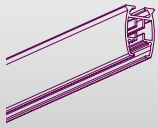


## FMS PLUS

### FMS PLUS TRACK



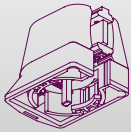
Aluminium extrusion 5/bundle  
Available length : 7 m (23')  
White 5131001700  
Black 5131006700

### FMS PLUS L-PULLEY



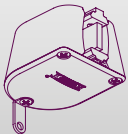
To create a double overlapping track system in combination with only one motor. 1/box  
White 5133011101

### FMS PLUS MOTOR PULLEY



Connects motor with FMS PLUS track 1/box  
White 5133011000  
Black 5133016000

### FMS PLUS RETURN PULLEY



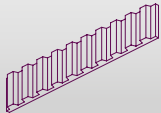
Reverses the FMS Plus belt in the FMS Plus track 1/box  
White 5133011100  
Black 5133016100

### FMS PLUS MOTOR PULLEY UPSIDE DOWN



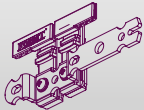
Can be used to place the motor upside down 1/box  
White 5133011003

### FMS PLUS TRANSPORT BELT



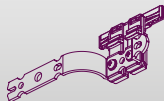
Toothed belt to be installed inside FMS Plus track 100 mtr/roll  
5133501000

### FMS PLUS MASTER CARRIER UNDERLAP



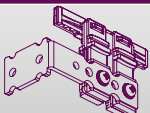
Arm is reversible 10/box  
White 5135801000  
Black 5135806000

### FMS PLUS MASTER CARRIER OVERLAP



Arm is reversible 10/box  
White 5135901000  
Black 5135906000

### FMS PLUS MASTER CARRIER EASY FLEX L&R



White 10/box  
5135901010

### ECONOMY CARRIER



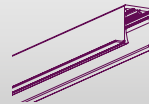
Can turn in the track 100/box  
White 2510601000  
Black 2510606000

### FMS PLUS RECESS COVERPLATE UPSIDE DOWN



Coverplate for recess; motor pulley 1/box  
White 5133011004

### FMS PLUS RECESS PROFILE



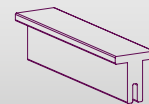
Pre-drilled 7 mtr (23')  
Combine with fixing strip  
White

### FMS PLUS RECESS PROFILE FIXING STRIP



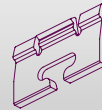
Combine with profile 6 mtr (20')  
White 5160100000

### FMS T-BENDING STRIP



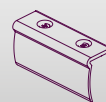
90 cm  
5160100000

### FMS PLUS PROFILE WEDGE



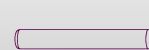
To fix the track into the profile 10/box  
5131001100

### FMS PLUS / MTS TRACK BRIDGE



To join two pieces of track; 10/box  
6,5 cm White 4518701000  
28 cm White 4518601000

### FMS PLUS / KS TRACK CONNECTORPIN



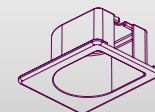
Stainless steel, 2 x 20 mm 50/box  
For a firm seamless connection 9900000012

### FMS PLUS RECESS TRACK



Preshaped 90 degrees curve 1 piece  
for FMS plus track 51311011790

### FMS PLUS RECESS COVERPLATE



Coverplate for recess; motor and return pulley 1/box  
White 5133011104

**FOREST**<sup>®</sup>  
DRAPERY HARDWARE



JUST A GENTLE TOUCH...



REMOTE CONTROL



SILENT TOUCH

OFFICE AUTOMATION



HOTEL AUTOMATION



HOME AUTOMATION



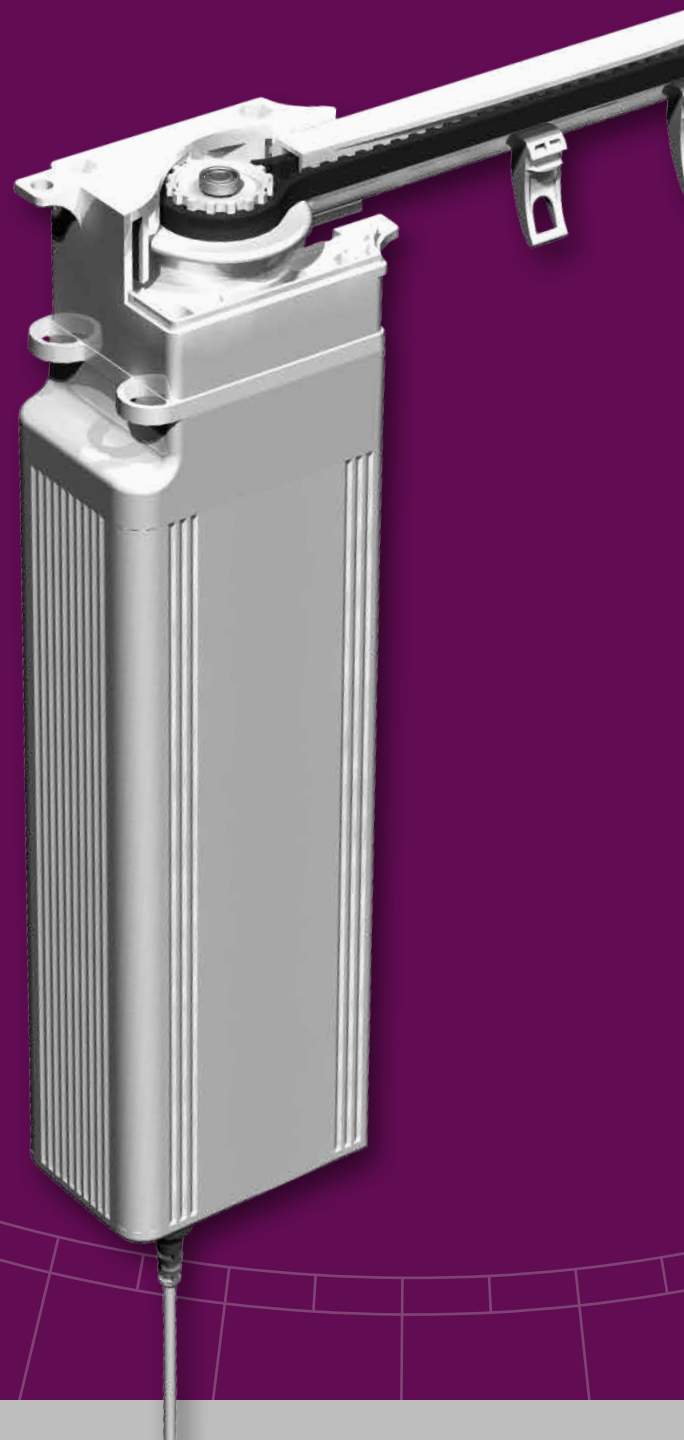
## PRODUCT INFORMATION

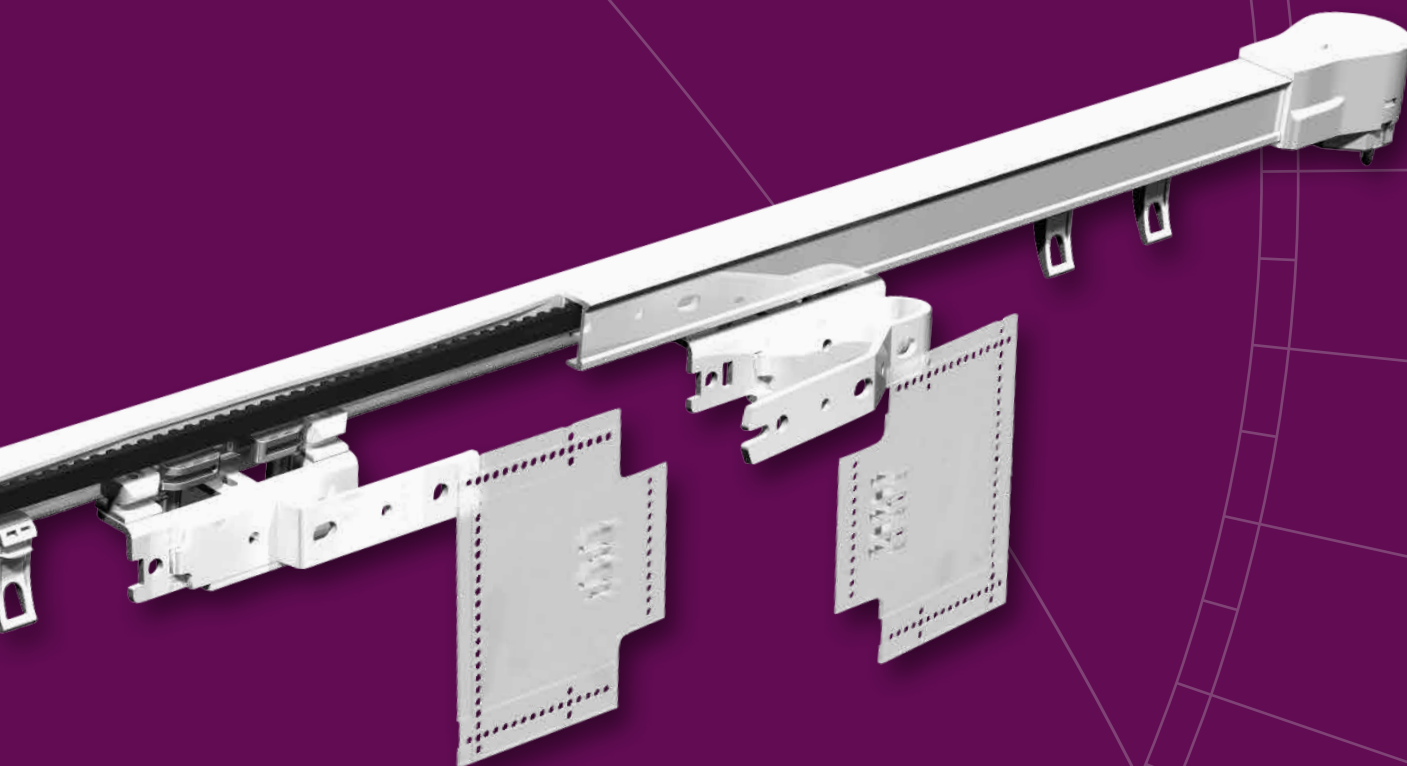
The Forest Shuttle motorized system is available in three types, Shuttle M, Shuttle L and Shuttle S. All three motors offer these functions:

- Touch Impulse Technology, gently pulling the curtain by hand will activate the motor (standard feature);
- Integrated Emergency Control with automatic de-clutch in case of power failure, to ensure a manual operation of the curtains (standard feature);
- Modular motor, different modules can be attached for various control options: Radio Frequency, Wall Switch, Infrared, Domotics, Building/Hotel Automation, Serial Communication, Z-wave, etc.;
- Ultra Silent motor;
- Slow start and slow stop;
- Full automatic setting of the limits;
- Programming of intermediate positions possible;
- Touch Impulse Sensitivity adjustable; high sensitivity, low sensitivity, and off;
- Stack-back position programmable to every desired setting;
- FMS track and components available in white, silver and black;
- Clickable off-set carriers for a straight heading of the curtain; rolling carriers and FES Easyfold carriers also available;
- Kevlar based drive belt;
- All KS brackets applicable;
- Motors can also be used on MRS Motorized Rod System;
- Tandem motor application possible as well.



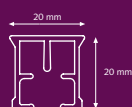
**BOTTOM VIEW**  
FOREST SHUTTLE



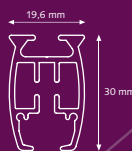


## SPECIFICATIONS TRACK

- FMS Track:**
- Weight 303 gr /mtr (3,25 ounce/ft.)
  - Aluminium Extrusion
  - Size 20 x 20 mm (0.8 x 0.8 inch)

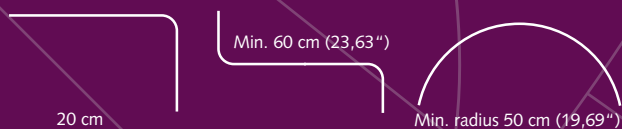


- FMS Plus:**
- Weight 500 gr/mtr. (5,36 ounce/ft.)
  - Aluminium Extrusion
  - Size 19,6x30 mm (0.8x1.2 Inch)



## BENDING / CURVING

The motor can be used in a track with one or two bends of 90 degrees. The track can be bended and reversed bended with a radius of 20 cm (8"). Continuous curving can be done with the Electric Powered Bender.



## CONTROL OPTIONS

### BUILDING AUTOMATION



Designed for use in any building automation system through the integrated dry contact port in the motor. 230V direct control is possible with the optional Dry Contact Relay. The BUS ports allow for individual and group controls of the motors.

### TOUCH IMPULSE TECHNOLOGY



A gentle pull will activate the curtain thanks to the smart Touch Impulse Technology of the motor. Standard feature.

### INTEGRATED EMERGENCY CONTROL



In case of power failure, the curtain can still be moved manually. Standard feature.

### DIAMOND SENSE REMOTE CONTROL



Available in white and black, can be used to control all forest motorized window decoration systems. With 15 individually channels or in 2 group.

### RF/Z-WAVE DOMOTICA CONTROL



Wireless Domotics communication with data feedback and automatic routing in a mesh-network environment. Open protocol with "Scene Control". Works with the Forest Touch App for IOS and Android devices.

## COMPATIBLE WITH



[www.amx.com](http://www.amx.com)



[www.knx.nl](http://www.knx.nl)



[www.z-wave.com](http://www.z-wave.com)



[www.crestron.com](http://www.crestron.com)



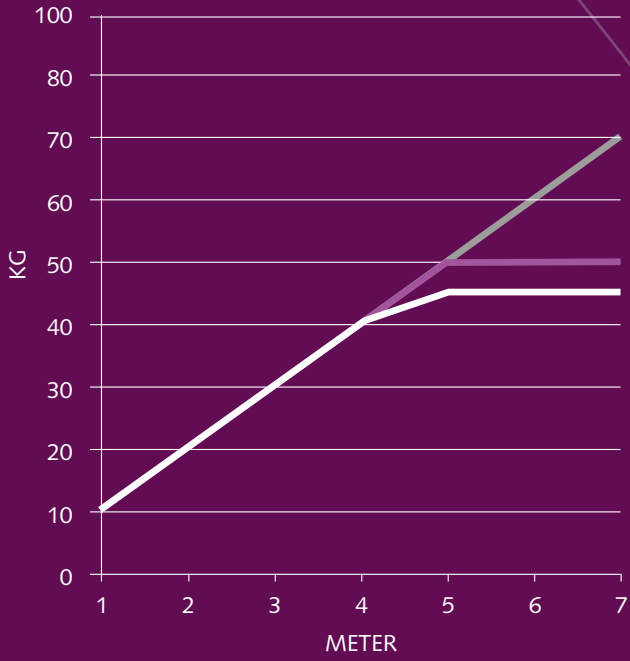
SMARTHOMES

[www.smart-homes.nl](http://www.smart-homes.nl)

Detailed schedules on how to program the Forest Shuttle are included with the motor and can be found on our website [www.forestgroup.com](http://www.forestgroup.com)

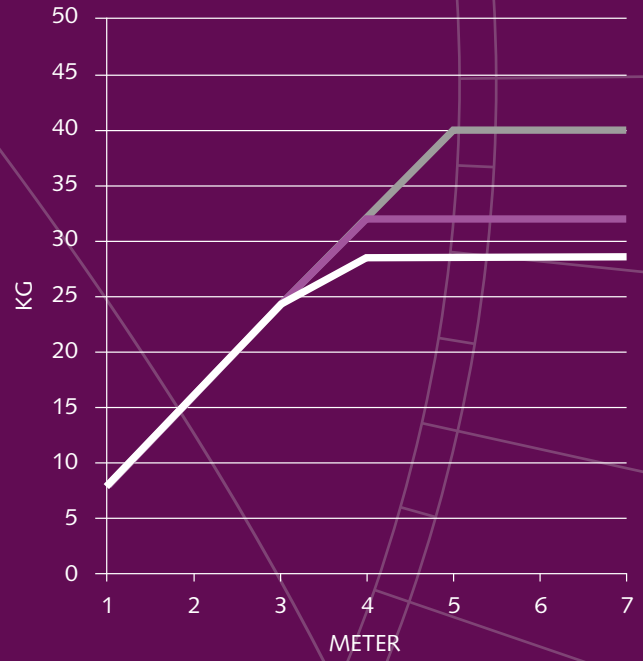
The Forest<sup>®</sup> Shuttle is compatible with many other Building Automation and Domotics systems, thanks to its modular construction. A competitive advantage over the motorized drapery systems in the world!

**SHUTTLE M LOAD TABLE:**



- Straight
- One Bend/Curve
- Two Bends

**SHUTTLE S/L LOAD TABLE:**



	<b>Shuttle M</b>	<b>Shuttle S</b>	<b>Shuttle L</b>
Voltage Shuttle	24Vdc	24Vdc	100 - 240V~ 50 - 60Hz
RF Multi Receiver	Internal, optional	Internal	Internal
Power Supply	External, 100-240Vac – 1,5A - 50-60Hz; Output 24Vdc - 2,7A	External, 100 - 240Vac - 0,8A - 50 - 60Hz; Output 24Vdc - 2,5A	Internal
Max. power	65W	40W	40W
Torque:	1,5 Nm	1,0 Nm	1,0 Nm
Speed:	15 cm/s	14 – 17cm/s	14 – 17cm/s
Noise Level:	< 40 dB(A)	< 40 dB(A)	< 40 dB(A)
Max. curtain weight	70 kg	40 kg	40 kg
Dimensions Motor:	7 x 5 x 23 cm	7 x 5 x 20 cm	7 x 5 x 28 cm
Dimensions Power Supply	50 x 110 x 30 mm	50 x 80 x 30 mm	-
Protection degree	IP20	IP20	IP20
Max. running time	175 sec (in one direction)	240 sec (in one direction)	240 sec. (in one direction)
Certification & Marking:	CE/FCC	CE/FCC	CE/FCC

## FOREST SHUTTLE

### FOREST SHUTTLE 'L' 230 VOLT AC



Motor with internal RF Multi Receiver and integrated 24 V power Supply 110 – 240 V. Touch Impulse and Emergency Control as standard.

*Dimensions 7 x 5 x 28 cm* 1/box  
 White 5232000001  
 Silver 5232003001  
 Black 5232006001  
 With Z-wave receiver built-in 5232000002

### FOREST SHUTTLE 'M' 24 VOLT DC



Strongest motor with standard Touch Impulse System and Emergency Control and with internal RF Multi Receiver.

*Dimensions: 7x5x23 cm (2.76x1.97x9.25")* 1/box  
 White 5232000003  
 Black 5232006003  
 With Z-wave receiver built-in

### FOREST SHUTTLE 'S' 24 VOLT DC



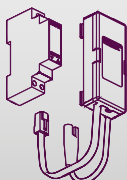
Motor with internal RF Multi Receiver, Touch Impulse and Emergency Control as standard. 24 V Power supply 110 – 240 V to be ordered separately.  
*Dimensions 7 x 5 x 20 cm* 5232000000

### POWER CABLE 4M



EU	White	5201001104
	Black	5201006104
UK	White	5201001134
		1/box

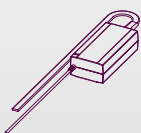
### FOREST AC CONTROL



Use the AC control in combination with the Shuttle motor for Live AC (110 Vac or 230 Vac)

Forest Shuttle AC control set	5201002202	1/box
Secondary unit - potential free relay	5201002200	1/box

### FOREST ADAPTOR



Forest adaptor set complete for Shuttle 'M' 1/box  
 (EU) incl. wall bracket 5201002002  
 (UK) incl. wall bracket 5201002004  
 (EU) incl. wall bracket black 5201006002  
 (USA) incl. wall bracket 5201002005

Forest adaptor for Shuttle 'S' ex. plug  
 Plugs available in versions: EU 5201001101  
 UK 5201001131  
 AUS 5201001141  
 USA 5201001121

### SHUTTLE MULTI RECEIVER CLICK ON



To be used in case of Z-wave motor that also has to be controlled with Diamond remote control. 5201001362 1/each

### FOREST PULSE WALL SWITCH



*Dimensions: 6,5 x 5,5 x 2,7 cm (2.56 x 2.17 x 1.06")* 5201001900 1/box

### FOREST DIAMOND SENSE REMOTE CONTROL



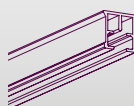
15 or 2 Channel incl. timer 1/box  
 White 5201091470  
 Black 5201096470

### MULTI WIRELESS WALL SWITCH



2-channel wall switch. 1/each  
*Dimension: 8,5 x 8,5 x 1 cm.*  
 White 5201001480  
 Black 5201006480

### FMS TRACK



Aluminium extrusion, powder coated black, lubricated. Available 10/bundle  
 lengths: 5,80 m (19') 5101001580  
 7 m (23') 5101001700  
 7 m (23'), Silver 5101003700  
 7 m (23'), Black 5101006700

### FMS CARRIER



"Klickable", offset, made of UV-resistant plastic. 10 Carriers on a break-away strip, can be clicked into the track after installation. 250/box  
 White 2510101000  
 Silver 2510103000  
 Black 2510106000

### FMS/CCS/MRS WHEEL CARRIER



The wheel carrier goes smoothly over a splice. 5210101002 100/box

### FMS TRACK JOINER



Used to make a solid connection between two pieces of track. 10/box  
 White 2518401000  
 Silver 2518403000  
 Black 2518406000

### FMS TRANSPORT BELT



Toothed belt, to be installed inside the FMS Track. 5105501000 100 mtr/roll

### FMS MASTER CARRIER UNDERLAP CLICK ON



Reversible for Click on stiffner  
 White 5215801010  
 Silver 5215803010  
 Black 5215806010

### FMS MASTER CARRIER OVERLAP CLICK ON



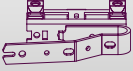
Reversible for Click on stiffner  
 White 5215901010  
 Silver 5215903010  
 Black 5215906010

### FMS MASTER CARRIER UNDERLAP R/L



Multifunctional - arm is reversible 15/box  
- will slide through curves  
White 5215801000  
Silver 5215803000  
Black 5215806000

### FMS MASTER CARRIER OVERLAP R/L



Multifunctional - arm is reversible 15/box  
- will slide through curves  
White 5215901000  
Silver 5215903000  
Black 5215906000

### UNDERLAP SINGLE R/L



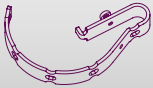
Multifunctional - arm is reversible - will slide trough curves. 15/box  
White 3016001000  
Black 3016006000

### PROLONGED OVERLAP CLICK ON



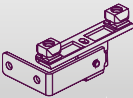
15 cm long. 15/box  
White 9500001010  
Black 9500006010

### EASYFLEX CURVED ARM



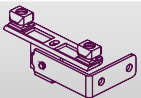
15/box  
White 9500001010  
Silver 9500003010  
Black 9500006010

### EASYFLEX MASTER CARRIER LEFT



90 degrees left 15/box  
4815351090

### EASYFLEX MASTER CARRIER RIGHT



90 degrees right 15/box  
4815451090

### Z-SHAPED OVERLAP ARM



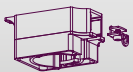
Reversible Z-shaped overlap arm. Fits CS, CCS and FMS mastercarries. For futher reducing of light leakage for center closing. 15/box  
9500001030

### CLICK ON STIFFNER



Recommended to attach to the FMS Master Carriers, stiffner to be stitched into the curtain. 5116001001  
15/box

### FMS MOTOR PULLEY



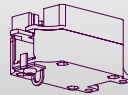
Connects motor with FMS Track. 1/box  
White 5103011000  
Silver 5103013000  
Black 5103016000

### FMS ANGLE PULLEY



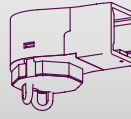
45 degrees adjustable. 1/box  
White 5103011010

### FMS MOTOR PULLEY UPSIDE DOWN



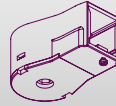
Can be used to place the motor upside down on the FMS track. 5103011003  
1/box

### FMS RETURN PULLEY



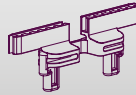
Reverses the FMS transport belt in the FMS Track. 1/box  
White 5103011100  
Silver 5103013100  
Black 5103016100

### FMS RETURN PULLEY EASYFLEX



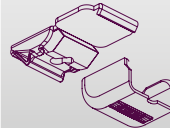
For single-closing curtains. 1/box  
White 5103011102  
Silver 5103013102  
Black 5103016102

### FMS CONNECTOR



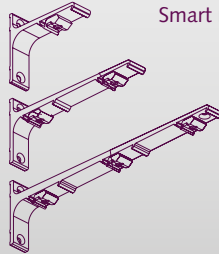
To fix the FMS Master Carrier onto the FMS transport belt. 50/box  
White 5103011500  
Silver 5103013500  
Black 5103016500

### SMART KLICK CEILING BRACKET



"Klicks" onto track, powder coated. 100/box  
White included cover cap 1018201001  
Silver included cover cap 1018203001  
Black included cover cap 1018206001

### ALUMINIUM WALL BRACKET



Smart Klick, powder coated. 1020301...  
7,5 cm single (3") 20/box  
10 cm single (4") 20/box  
15 cm double (6") 15/box  
20 cm double (8") 15/box  
25 cm triple (10") 10/box  
Colours: 01, 03, 06.

### SMART KLICK COVER CAP ALU WALL BRACKET UNIVERSAL



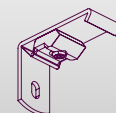
Colours: 01, 03, 06. 10213..000  
50/box

### FSS METAL BRACKET



Strong bracket to fit the Forest Skylight System to the wall or ceiling. 7160001000  
100/box

### SMART KLICK WALL BRACKET



3,5 cm (1,4") and 6 cm (2,4"). "Klicks" onto track, powder coated. One screw attachment. For light weight use only. Colours: 01, 03, 06. 50/box  
10202..035  
10202..060

### FOREST LUBRICANT



To lubricate components during assembly. 1/box  
5109010000