

JUST A GENTLE TOUCH...



REMOTE CONTROL



SILENT TOUCH

OFFICE AUTOMATION



HOTEL AUTOMATION



HOME AUTOMATION



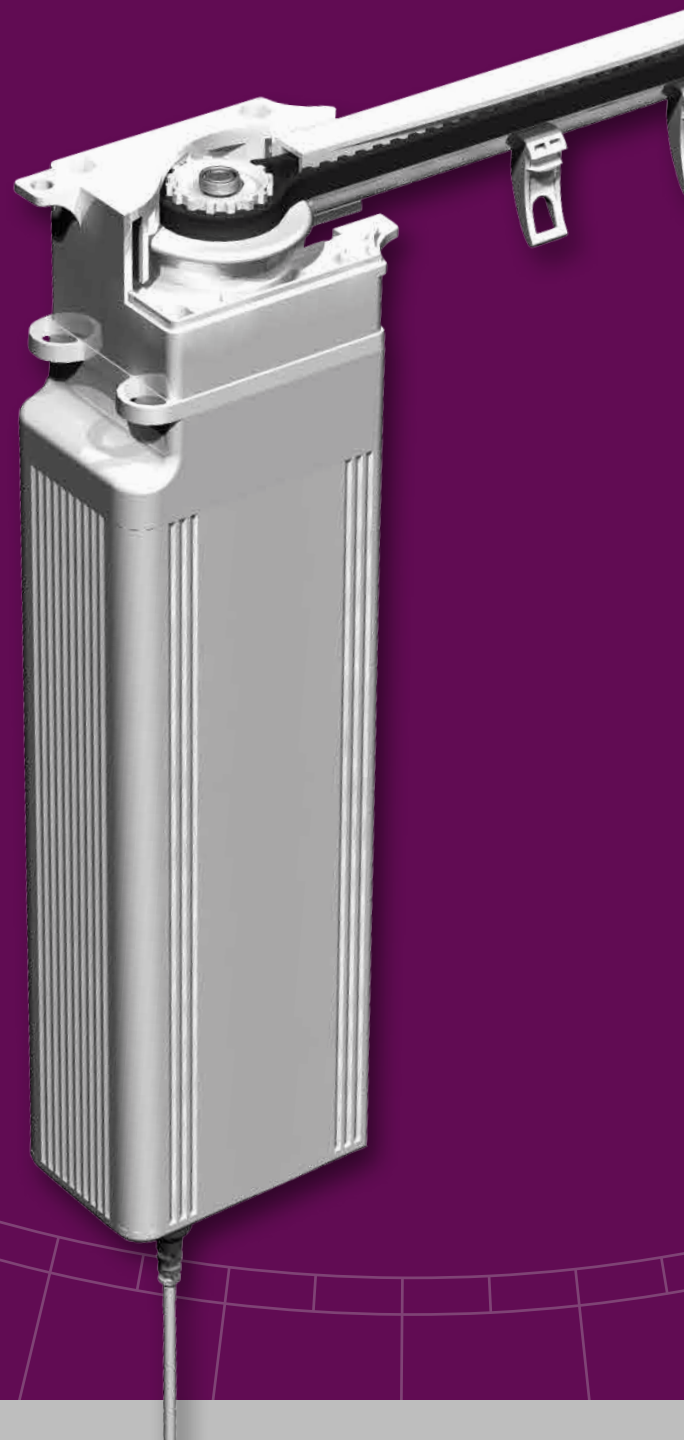
PRODUCT INFORMATION

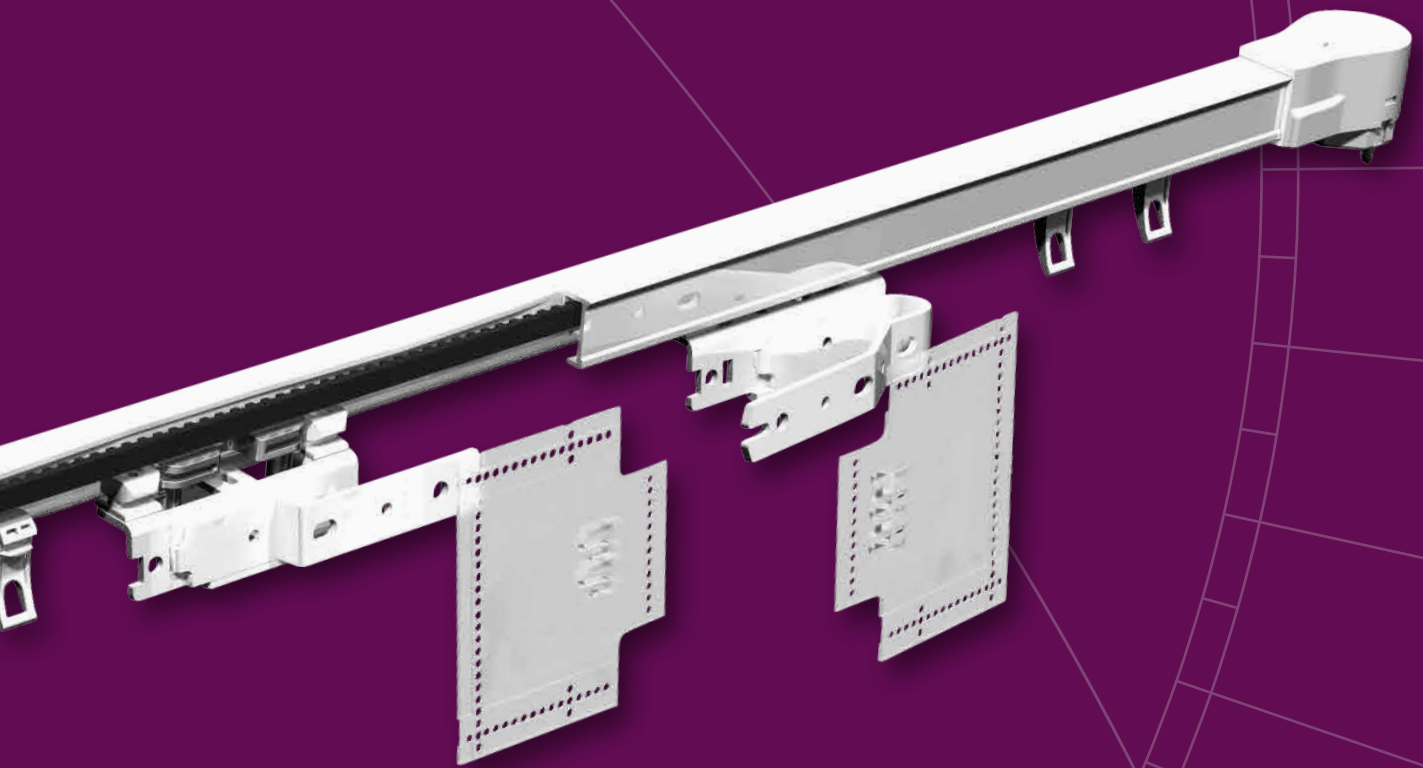
The Forest Shuttle motorized system is available in three types, Shuttle M, Shuttle L and Shuttle S. All three motors offer these functions:

- Touch Impulse Technology, gently pulling the curtain by hand will activate the motor (standard feature);
- Integrated Emergency Control with automatic de-clutch in case of power failure, to ensure a manual operation of the curtains (standard feature);
- Modular motor, different modules can be attached for various control options: Radio Frequency, Wall Switch, Infrared, Domotics, Building/Hotel Automation, Serial Communication, Z-wave, etc.;
- Ultra Silent motor;
- Slow start and slow stop;
- Full automatic setting of the limits;
- Programming of intermediate positions possible;
- Touch Impulse Sensitivity adjustable; high sensitivity, low sensitivity, and off;
- Stack-back position programmable to every desired setting;
- FMS track and components available in white, silver and black;
- Clickable off-set carriers for a straight heading of the curtain; rolling carriers and FES Easyfold carriers also available;
- Kevlar based drive belt;
- All KS brackets applicable;
- Motors can also be used on MRS Motorized Rod System;
- Tandem motor application possible as well.



BOTTOM VIEW
FOREST SHUTTLE

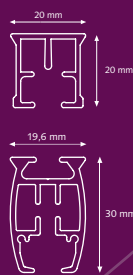




SPECIFICATIONS TRACK

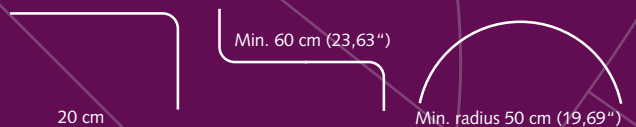
FMS Track: • Weight 303 gr /mtr
(3,25 ounce/ft.)
• Aluminium Extrusion
• Size 20 x 20 mm
(0.8 x 0.8 inch)

FMS Plus: • Weight 500 gr/mtr.
(5,36 ounce/ft.)
• Aluminium Extrusion
• Size 19,6x30 mm
(0.8x1.2 Inch)



BENDING / CURVING

The motor can be used in a track with one or two bends of 90 degrees. The track can be bended and reversed bended with a radius of 20 cm (8"). Continuous curving can be done with the Electric Powered Bender.



CONTROL OPTIONS

BUILDING AUTOMATION



Designed for use in any building automation system through the integrated dry contact port in the motor. 230V direct control is possible with the optional Dry Contact Relay. The BUS ports allow for individual and group controls of the motors.

TOUCH IMPULSE TECHNOLOGY



A gentle pull will activate the curtain thanks to the smart Touch Impulse Technology of the motor. Standard feature.

INTEGRATED EMERGENCY CONTROL



In case of power failure, the curtain can still be moved manually. Standard feature.

DIAMOND SENSE REMOTE CONTROL



Available in white and black, can be used to control all forest motorized window decoration systems. With 15 individually channels or in 2 group.

RF/Z-WAVE DOMOTICA CONTROL



Wireless Domotics communication with data feedback and automatic routing in a mesh-network environment. Open protocol with "Scene Control". Works with the Forest Touch App for IOS and Android devices.

COMPATIBLE WITH



www.amx.com



www.knx.nl



www.z-wave.com



www.crestron.com



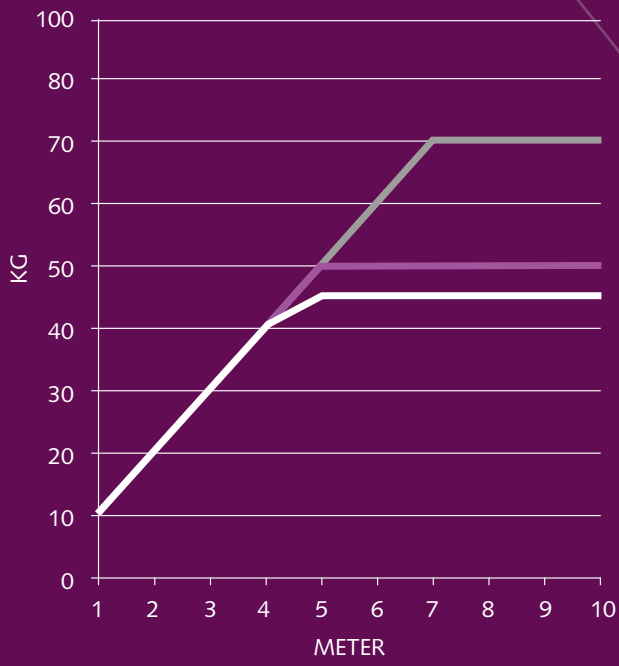
SMARTHOMES

www.smart-homes.nl

Detailed schedules on how to program the Forest Shuttle are included with the motor and can be found on our website www.forestgroup.com

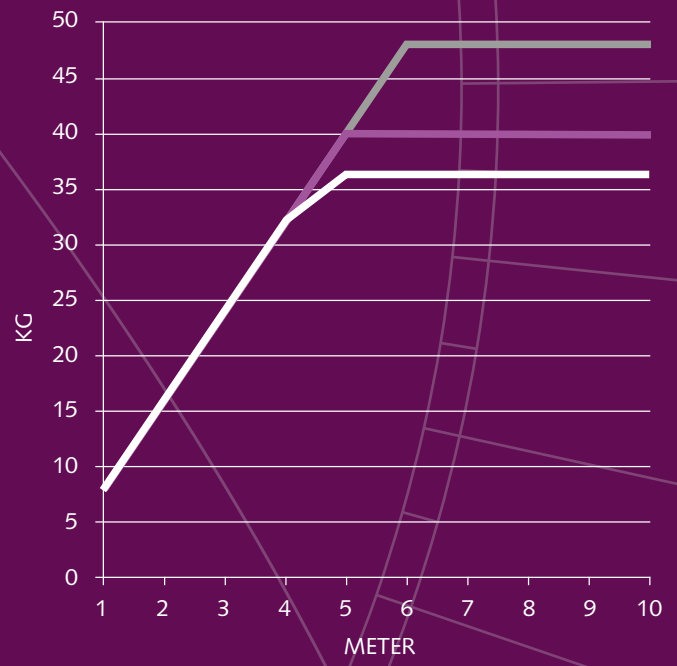
The Forest[®] Shuttle is compatible with many other Building Automation and Domotics systems, thanks to its modular construction. A competitive advantage over the motorized drapery systems in the world!

SHUTTLE M LOAD TABLE:



- Straight
- One Bend/Curve
- Two Bends

SHUTTLE S/L LOAD TABLE:



	Shuttle M	Shuttle S	Shuttle L
Voltage Shuttle	24Vdc	24Vdc	100 - 240V~ 50 - 60Hz
RF Multi Receiver	Internal, optional	Internal	Internal
Power Supply	External, 100-240Vac – 1,5A - 50-60Hz; Output 24Vdc - 2,7A	External, 100 - 240Vac - 0,8A - 50 - 60Hz; Output 24Vdc - 2,5A	Internal
Max. power	65W	40W	40W
Torque:	1,5 Nm	1,0 Nm	1,0 Nm
Speed:	15 cm/s	14 – 17cm/s	14 – 17cm/s
Noise Level:	< 40 dB(A)	< 40 dB(A)	< 40 dB(A)
Max. curtain weight	70 kg	40 kg	40 kg
Dimensions Motor:	7 x 5 x 23 cm	7 x 5 x 20 cm	7 x 5 x 28 cm
Dimensions Power Supply	50 x 110 x 30 mm	50 x 80 x 30 mm	-
Protection degree	IP20	IP20	IP20
Max. running time	175 sec (in one direction)	240 sec (in one direction)	240 sec. (in one direction)
Certification & Marking:	CE/FCC	CE/FCC	CE/FCC

FOREST SHUTTLE

FOREST SHUTTLE 'L' 230 VOLT AC



Motor with internal RF Multi Receiver and integrated 24 V power Supply 110 – 240 V. Touch Impulse and Emergency Control as standard.

Dimensions 7 x 5 x 28 cm 1/box
 White 5232000001
 Silver 5232003001
 Black 5232006001
 With Z-wave receiver built-in 5232000002

FOREST SHUTTLE 'M' 24 VOLT DC



Strongest motor with standard Touch Impulse System and Emergency Control and with internal RF Multi Receiver.

Dimensions: 7x5x23 cm (2.76x1.97x9.25") 1/box
 White 5232000003
 Black 5232006003
 With Z-wave receiver built-in

FOREST SHUTTLE 'S' 24 VOLT DC



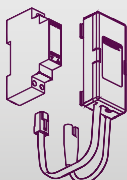
Motor with internal RF Multi Receiver, Touch Impulse and Emergency Control as standard. 24 V Power supply 110 – 240 V to be ordered separately.
Dimensions 7 x 5 x 20 cm 5232000000

POWER CABLE 4M



EU	White	5201001104
	Black	5201006104
UK	White	5201001134
		1/box

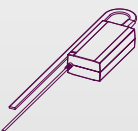
FOREST AC CONTROL



Use the AC control in combination with the Shuttle motor for Live AC (110 Vac or 230 Vac)

Forest Shuttle AC control set	5201002202	1/box
Secondary unit - potential free relay	5201002200	1/box

FOREST ADAPTOR



Forest adaptor set complete for Shuttle 'M'	1/box
(EU) incl. wall bracket	5201002002
(UK) incl. wall bracket	5201002004
(EU) incl. wall bracket black	5201006002
(USA) incl. wall bracket	5201002005

Forest adaptor for Shuttle 'S' ex. plug
 Plugs available in versions:

EU	5201001101
UK	5201001131
AUS	5201001141
USA	5201001121

SHUTTLE MULTI RECEIVER CLICK ON



To be used in case of Z-wave motor that also has to be controlled with Diamond remote control. 5201001362 1/each

FOREST PULSE WALL SWITCH



Dimensions: 6,5 x 5,5 x 2,7 cm (2.56 x 2.17 x 1.06") 5201001900 1/box

FOREST DIAMOND SENSE REMOTE CONTROL



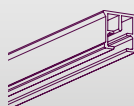
15 or 2 Channel incl. timer	1/box
White	5201091470
Black	5201096470

MULTI WIRELESS WALL SWITCH



2-channel wall switch.
Dimension: 8,5 x 8,5 x 1 cm. 1/each
 White 5201001480
 Black 5201006480

FMS TRACK



Aluminium extrusion, powder coated black, lubricated. Available lengths: 5,80 m (19') 5101001580
 7 m (23') 5101001700
 7 m (23'), Silver 5101003700
 7 m (23'), Black 5101006700

FMS CARRIER



"Klickable", offset, made of UV-resistant plastic. 10 Carriers on a break-away strip, can be clicked into the track after installation. White 250/box
 Silver 2510103000
 Black 2510106000

FMS/CCS/MRS WHEEL CARRIER



The wheel carrier goes smoothly over a splice. 5210101002 100/box

FMS TRACK JOINER



Used to make a solid connection between two pieces of track. 10/box
 White 2518401000
 Silver 2518403000
 Black 2518406000

FMS TRANSPORT BELT



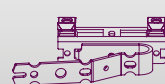
Toothed belt, to be installed inside the FMS Track. 5105501000 100 mtr/roll

FMS MASTER CARRIER UNDERLAP CLICK ON



Reversible for Click on stiffner
 White 5215801010
 Silver 5215803010
 Black 5215806010

FMS MASTER CARRIER OVERLAP CLICK ON



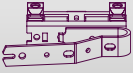
Reversible for Click on stiffner
 White 5215901010
 Silver 5215903010
 Black 5215906010

FMS MASTER CARRIER UNDERLAP R/L



Multifunctional - arm is reversible 15/box
- will slide through curves
White 5215801000
Silver 5215803000
Black 5215806000

FMS MASTER CARRIER OVERLAP R/L



Multifunctional - arm is reversible 15/box
- will slide through curves
White 5215901000
Silver 5215903000
Black 5215906000

UNDERLAP SINGLE R/L



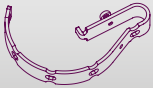
Multifunctional - arm is reversible - will slide trough curves. 15/box
White 3016001000
Black 3016006000

PROLONGED OVERLAP CLICK ON



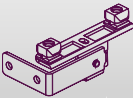
15 cm long. 15/box
White 9500001010
Black 9500006010

EASYFLEX CURVED ARM



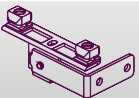
15/box
White 9500001010
Silver 9500003010
Black 9500006010

EASYFLEX MASTER CARRIER LEFT



90 degrees left 15/box
4815351090

EASYFLEX MASTER CARRIER RIGHT



90 degrees right 15/box
4815451090

Z-SHAPED OVERLAP ARM



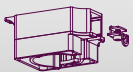
Reversible Z-shaped overlap arm. Fits CS, CCS and FMS mastercarries. For futher reducing of light leakage for center closing. 15/box
9500001030

CLICK ON STIFFNER



Recommended to attach to the FMS Master Carriers, stiffner to be stitched into the curtain. 5116001001
15/box

FMS MOTOR PULLEY



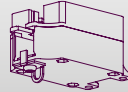
Connects motor with FMS Track. 1/box
White 5103011000
Silver 5103013000
Black 5103016000

FMS ANGLE PULLEY



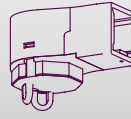
45 degrees adjustable. 1/box
White 5103011010

FMS MOTOR PULLEY UPSIDE DOWN



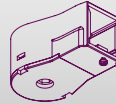
Can be used to place the motor upside down on the FMS track. 5103011003
1/box

FMS RETURN PULLEY



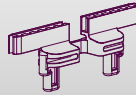
Reverses the FMS transport belt in the FMS Track. 1/box
White 5103011100
Silver 5103013100
Black 5103016100

FMS RETURN PULLEY EASYFLEX



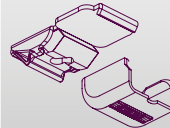
For single-closing curtains. 1/box
White 5103011102
Silver 5103013102
Black 5103016102

FMS CONNECTOR



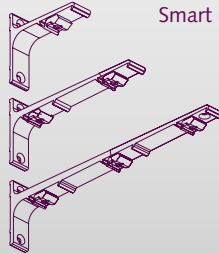
To fix the FMS Master Carrier onto the FMS transport belt. 50/box
White 5103011500
Silver 5103013500
Black 5103016500

SMART KLICK CEILING BRACKET



"Klicks" onto track, powder coated. 100/box
White included cover cap 1018201001
Silver included cover cap 1018203001
Black included cover cap 1018206001

ALUMINIUM WALL BRACKET



Smart Klick, powder coated. 1020301...
7,5 cm single (3") 20/box
10 cm single (4") 20/box
15 cm double (6") 15/box
20 cm double (8") 15/box
25 cm triple (10") 10/box
Colours: 01, 03, 06.

SMART KLICK COVER CAP ALU WALL BRACKET UNIVERSAL



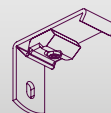
Colours: 01, 03, 06. 10213..000
50/box

FSS METAL BRACKET



Strong bracket to fit the Forest Skylight System to the wall or ceiling. 7160001000
100/box

SMART KLICK WALL BRACKET



3,5 cm (1,4") and 6 cm (2,4"). "Klicks" onto track, powder coated. One screw attachment. For light weight use only. Colours: 01, 03, 06. 50/box
10202..035
10202..060

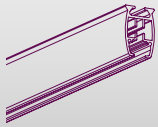
FOREST LUBRICANT



To lubricate components during assembly. 1/box
5109010000

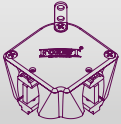
FMS PLUS

FMS PLUS TRACK



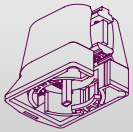
Aluminium extrusion 5/bundle
Available length : 7 m (23')
White 5131001700
Black 5131006700

FMS PLUS L-PULLEY



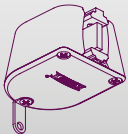
To create a double overlapping track system in combination with only one motor. 1/box
White 5133011101

FMS PLUS MOTOR PULLEY



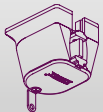
Connects motor with FMS PLUS track 1/box
White 5133011000
Black 5133016000

FMS PLUS RETURN PULLEY



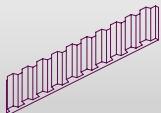
Reverses the FMS Plus belt in the FMS Plus track 1/box
White 5133011100
Black 5133016100

FMS PLUS MOTOR PULLEY UPSIDE DOWN



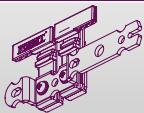
Can be used to place the motor upside down 1/box
White 5133011003

FMS PLUS TRANSPORT BELT



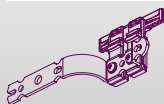
Toothed belt to be installed inside FMS Plus track 100 mtr/roll
5133501000

FMS PLUS MASTER CARRIER UNDERLAP



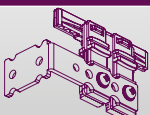
Arm is reversible 10/box
White 5135801000
Black 5135806000

FMS PLUS MASTER CARRIER OVERLAP



Arm is reversible 10/box
White 5135901000
Black 5135906000

FMS PLUS MASTER CARRIER EASY FLEX L&R



White 10/box
5135901010

ECONOMY CARRIER



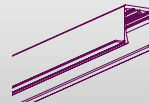
Can turn in the track 100/box
White 2510601000
Black 2510606000

FMS PLUS RECESS COVERPLATE UPSIDE DOWN



Coverplate for recess; motor pulley 1/box
White 5133011004

FMS PLUS RECESS PROFILE



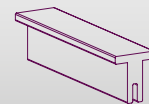
Pre-drilled 7 mtr (23')
Combine with fixing strip
White 5002001701

FMS PLUS RECESS PROFILE FIXING STRIP



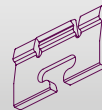
Combine with profile 6 mtr (20')
White 5160100000

FMS T-BENDING STRIP



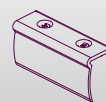
90 cm
5160100000

FMS PLUS PROFILE WEDGE



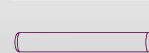
To fix the track into the profile 10/box
5131001100

FMS PLUS / MTS TRACK BRIDGE



To join two pieces of track; 10/box
6,5 cm White 4518701000
28 cm White 4518601000

FMS PLUS / KS TRACK CONNECTORPIN



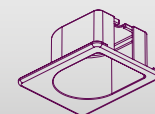
Stainless steel, 2 x 20 mm 50/box
For a firm seamless connection 9900000012

FMS PLUS RECESS TRACK



Preshaped 90 degrees curve for FMS plus track 1 piece
51311011790

FMS PLUS RECESS COVERPLATE



Coverplate for recess; motor and return pulley 1/box
White 5133011104

FOREST[®]
DRAPERY HARDWARE

