

JUST A GENTLE TOUCH...



**REMOTE
CONTROL**



**SILENT
TOUCH**

OFFICE AUTOMATION



HOTEL AUTOMATION



HOME AUTOMATION



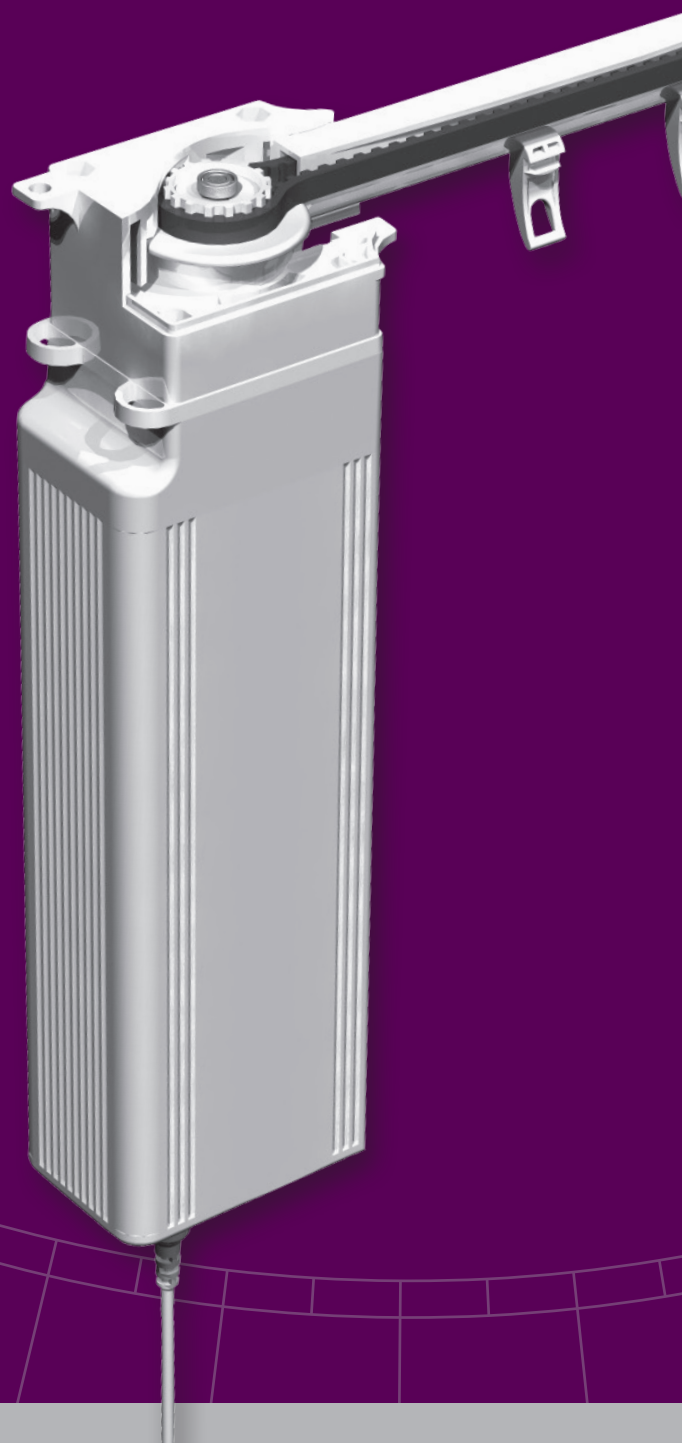
PRODUCT INFORMATION

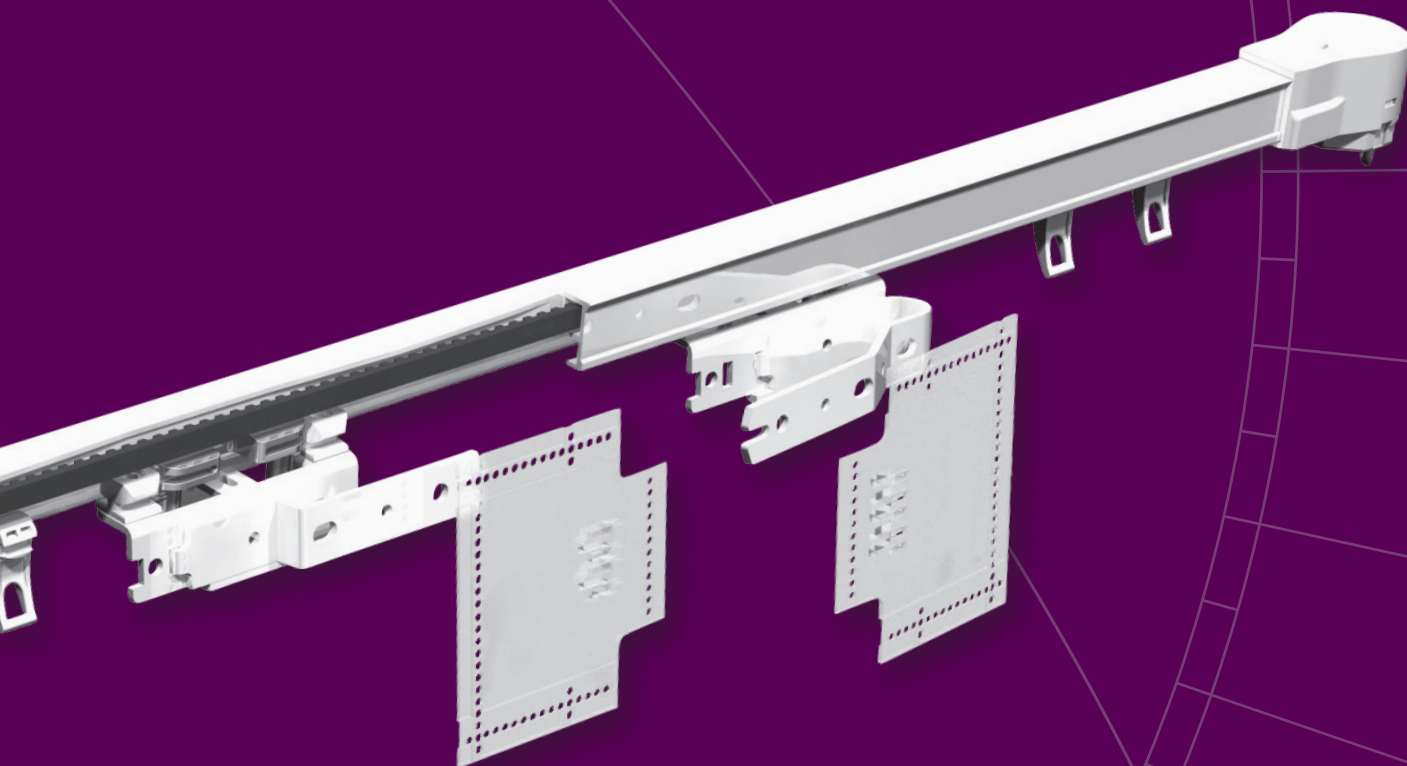
The Forest Shuttle motorized system is available in three types, Shuttle M, Shuttle L and Shuttle S. All three motors offer these functions:

- Touch Impulse Technology, gently pulling the curtain by hand will activate the motor (standard feature);
- Integrated Emergency Control with automatic de-clutch in case of power failure, to ensure a manual operation of the curtains (standard feature);
- Modular motor, different modules can be attached for various control options: Radio Frequency, Wall Switch, Infrared, Domotics, Building/Hotel Automation, Serial Communication, Z-wave, etc.;
- Ultra Silent motor;
- Slow start and slow stop;
- Full automatic setting of the limits;
- Programming of intermediate positions possible;
- Touch Impulse Sensitivity adjustable; high sensitivity, low sensitivity, and off;
- Stack-back position programmable to every desired setting;
- FMS track and components available in white, silver and black;
- Clickable off-set carriers for a straight heading of the curtain; rolling carriers and FES Easyfold carriers also available;
- Kevlar based drive belt;
- All KS brackets applicable;
- Motors can also be used on MRS Motorized Rod System;
- Tandem motor application possible as well.



BOTTOM VIEW
FOREST SHUTTLE

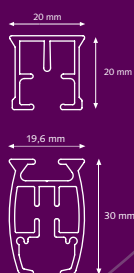




SPECIFICATIONS TRACK

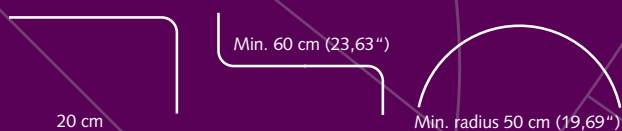
FMS Track: • Weight 303 gr /mtr
(3,25 ounce/ft.)
• Aluminium Extrusion
• Size 20 x 20 mm
(0.8 x 0.8 inch)

FMS Plus: • Weight 500 gr/mtr.
(5,36 ounce/ft.)
• Aluminium Extrusion
• Size 19,6x30 mm
(0.8x1.2 Inch)



BENDING / CURVING

The motor can be used in a track with one or two bends of 90 degrees. The track can be bended and reversed bended with a radius of 20 cm (8"). Continuous curving can be done with the Electric Powered Bender.



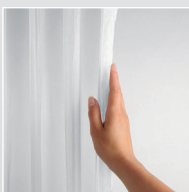
CONTROL OPTIONS

BUILDING AUTOMATION



Designed for use in any building automation system through the integrated dry contact port in the motor. 230V direct control is possible with the optional Dry Contact Relay. The BUS ports allow for individual and group controls of the motors.

TOUCH IMPULSE TECHNOLOGY



A gentle pull will activate the curtain thanks to the smart Touch Impulse Technology of the motor. Standard feature.

INTEGRATED EMERGENCY CONTROL



In case of power failure, the curtain can still be moved manually. Standard feature.

DIAMOND SENSE REMOTE CONTROL



Available in white and black, can be used to control all forest motorized window decoration systems. With 15 individually channels or in 2 group.

Z-WAVE DOMOTICA CONTROL



Wireless Domotics communication with data feedback and automatic routing in a mesh-network environment. Open protocol with "Scene Control". Works with the Forest Touch App for IOS and Android devices.

COMPATIBLE WITH



www.amx.com



www.knx.nl



www.z-wave.com



www.crestron.com

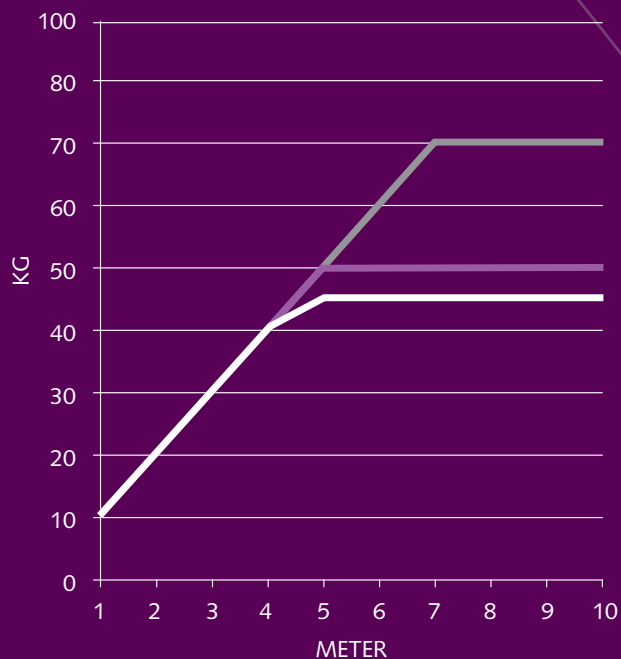


www.smart-homes.nl

Detailed schedules on how to program the Forest Shuttle are included with the motor and can be found on our website www.forestgroup.com

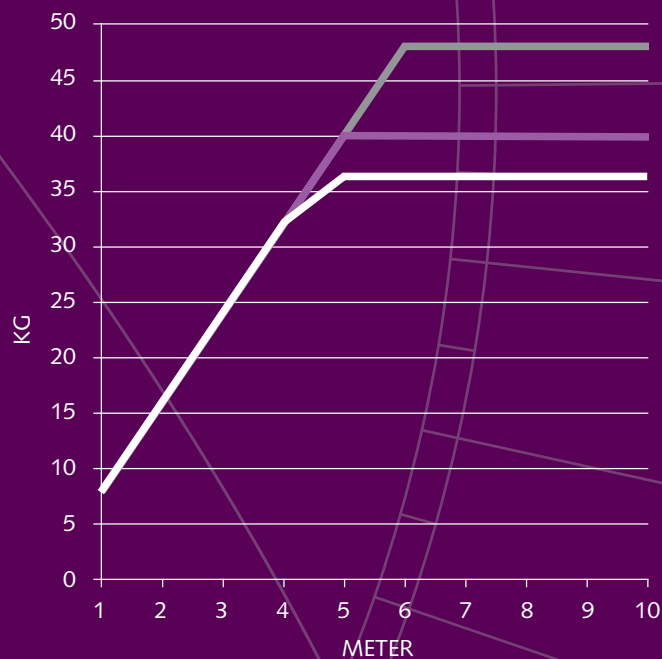
The Forest® Shuttle is compatible with many other Building Automation and Domotics systems, thanks to its modular construction. A competitive advantage over the motorized drapery systems in the world!

SHUTTLE M LOAD TABLE:



— Straight
— One Bend/Curve
— Two Bends

SHUTTLE S/L LOAD TABLE:



	Shuttle M	Shuttle S	Shuttle L
Voltage Shuttle	24Vdc	24Vdc	100 - 240V~ 50 - 60Hz
RF Multi Receiver	Internal, optional	Internal	Internal
Power Supply	External, 100-240Vac – 1,5A - 50-60Hz; Output 24Vdc - 2,7A	External, 100 - 240Vac - 0,8A - 50 - 60Hz; Output 24Vdc - 2,5A	Internal
Max. power	65W	40W	40W
Torque:	1,5 Nm	1,0 Nm	1,0 Nm
Speed:	15 cm/s	14 – 17cm/s	14 – 17cm/s
Noise Level:	< 40 dB(A)	< 40 dB(A)	< 40 dB(A)
Max. curtain weight	70 kg	40 kg	40 kg
Dimensions Motor:	7 x 5 x 23 cm	7 x 5 x 20 cm	7 x 5 x 28 cm
Dimensions Power Supply	50 x 110 x 30 mm	50 x 80 x 30 mm	-
Protection degree	IP20	IP20	IP20
Max. running time	175 sec (in one direction)	240 sec (in one direction)	240 sec. (in one direction)
Certification & Marking:	CE/FCC	CE/FCC	CE/FCC

FOREST SHUTTLE

FOREST SHUTTLE 'L' 230 VOLT AC



Motor with internal RF Multi Receiver and integrated 24 V power Supply 110 – 240 V. Touch Impulse and Emergency Control as standard.

Dimensions 7 x 5 x 28 cm 1/box

White 5232000001

Silver 5232003001

Black 5232006001

With Z-wave receiver built-in 5232000002

FOREST SHUTTLE 'M' 24 VOLT DC



Strongest motor with standard Touch Impulse System and Emergency Control and with internal RF Multi Receiver.

Dimensions: 7x5x23 cm (2.76x1.97x9.25") 1/box

White 5232000003

Black 5232006003

With Z-wave receiver built-in

FOREST SHUTTLE 'S' 24 VOLT DC



Motor with internal RF Multi Receiver, Touch Impulse and Emergency Control as standard. 24 V Power supply 110 – 240 V to be ordered separately.

Dimensions 7 x 5 x 20 cm 5232000000

1/box

White 5232000003

Black 5232006003

POWER CABLE 4M



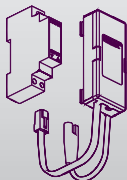
EU White 5201001104

Black 5201006104

UK White 5201001134

1/box

FOREST AC CONTROL

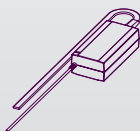


Use the AC control in combination with the Shuttle motor for Live AC (110 Vac or 230 Vac)

Forest Shuttle AC controle set 5201002202 1/box

Secondary unit - potential free relay 5201002200 1/box

FOREST ADAPTOR



Forest adaptor set complete for Shuttle 'M' 1/box

(EU) incl. wall bracket 5201002002

(UK) incl. wall bracket 5201002004

(EU) incl. wall bracket black 5201006002

(USA) incl. wall bracket 5201002005

Forest adaptor for Shuttle 'S' ex. plug
Plugs available in versions: EU 5201001101

UK 5201001131

AUS 5201001141

USA 5201001121

SHUTTLE MULTI RECEIVER CLICK ON



To be used in case of Z-wave motor that also has to be controlled with Diamond remote control. 5201001362 1/each

FOREST PULSE WALL SWITCH



Dimensions: 6,5 x 5,5 x 2,7 cm (2.56 x 2.17 x 1.06") 5201001900 1/box

DIAMOND SENSE REMOTE CONTROL



15 + 2 channel remote control. 1/each

White 5201091470

Black 5201096470

MULTI WIRELESS WALL SWITCH



2-channel wall switch.

Dimension: 8,5 x 8,5 x 1 cm. 1/each

White 5201001480

Black 5201006480

FOREST MULTI-REMOTE



15 channels incl. timer. 1/each

White 5201001480

5201006480

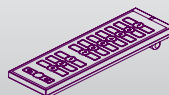
SHUTTLE INFRARED REMOTE CONTROL



6 channel infrared remote control. 5201001250 1/box

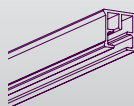
receiver cable 60cm. 5201001260 1/box

FOREST Z-WAVE REMOTE CONTROL



7-channel remote control with scene setting options. 5201001700 1/box

FMS TRACK



Aluminium extrusion, powder coated black, lubricated. Available 10/bundle

lengths: 5,80 m (19') 5101001580

7 m (23') 5101001700

7 m (23'), Silver 5101003700

7 m (23'), Black 5101006700

FMS CARRIER



"Clickable", offset, made of UV-resistant plastic. 10 Carriers on a break-away strip, can be clicked into the track after installation. 250/box

White 2510101000

Silver 2510103000

Black 2510106000

FMS/CCS/MRS WHEEL CARRIER



The wheel carrier goes smoothly over a splice. 5210101002 100/box

FMS TRACK JOINER



Used to make a solid connection between two pieces of track. 10/box

White 2518401000

Silver 2518403000

Black 2518406000

FMS TRANSPORT BELT



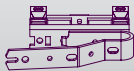
Toothed belt, to be installed inside the FMS Track. 5105501000 100 mtr/roll

FMS MASTER CARRIER UNDERLAP



Multifunctional - arm is reversible for Click on stiffner 15/box
White 5215801010
Silver 5215803010
Black 5215806010

FMS MASTER CARRIER OVERLAP



Multifunctional - arm is reversible for Click on stiffner 15/box
White 5215901010
Silver 5215903010
Black 5215906010

UNDERLAP SINGLE R/L



Multifunctional - arm is reversible - will slide trough curves. 15/box
White 3016001000
Black 3016006000

PROLONGED OVERLAP CLICK ON



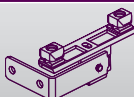
15 cm long. 15/box
White 95000001010
Black 95000006010

EASYFLEX CURVED ARM



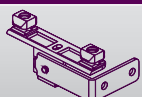
White 15/box
Silver 95000001010
Black 95000003010
95000006010

EASYFLEX MASTER CARRIER LEFT



90 degrees left 15/box
4815351090

EASYFLEX MASTER CARRIER RIGHT



90 degrees right 15/box
4815451090

Z-SHAPED OVERLAP ARM



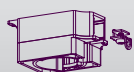
Reversible Z-shaped overlap arm. Fits CS, CCS and FMS mastercarries. For futher reducing of light leakage for center closing. 15/box
9500001030

CLICK ON STIFFNER



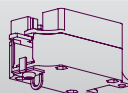
Recommended to attach to the FMS Master Carriers, stiffner to be stitched into the curtain. 5116001001
15/box

FMS MOTOR PULLEY



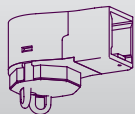
Connects motor with FMS Track. 1/box
White 5103011000
Silver 5103013000
Black 5103016000

FMS MOTOR PULLEY UPSIDE DOWN



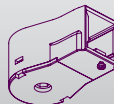
Can be used to place the motor upside down on the FMS track. 5103011003
1/box

FMS RETURN PULLEY



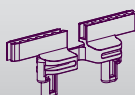
Reverses the FMS transport belt in the FMS Track. 1/box
White 5103011100
Silver 5103013100
Black 5103016100

FMS RETURN PULLEY EASYFLEX



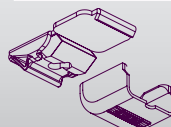
For single-closing curtains. 1/box
White 5103011102
Silver 5103013102
Black 5103016102

FMS CONNECTOR



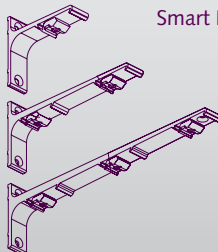
To fix the FMS Master Carrier onto the FMS transport belt. 50/box
White 5103011500
Silver 5103013500
Black 5103016500

SMART KLIKK CEILING BRACKET



"Clicks" onto track, powder coated. 100/box
White included cover cap 1018201001
Silver included cover cap 1018203001
Black included cover cap 1018206001

ALUMINIUM WALL BRACKET



Smart Klick, powder coated. 1020301...
7,5 cm single (3") 20/box
10 cm single (4") 20/box
15 cm double (6") 15/box
20 cm double (8") 15/box
25 cm triple (10") 10/box
Colours: 01, 03, 06.

SMART KLIKK COVER CAP ALU WALL BRACKET UNIVERSAL



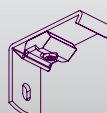
Colours: 01, 03, 06. 10213..000
50/box

FSS METAL BRACKET



Strong bracket to fit the Forest Skylight System to the wall or ceiling. 7160001000
100/box

SMART KLIKK WALL BRACKET



3,5 cm (1,4") and 6 cm (2,4"). "Clicks" onto track, powder coated. One screw attachment. For light weight use only. Colours: 01, 03, 06. 50/box
10202..035
10202..060

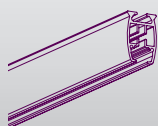
FOREST LUBRICANT



To lubricate components during assembly. 1/box
5109010000

FMS PLUS

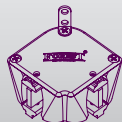
FMS PLUS TRACK



Aluminium extrusion
Available length : 7 m (23')
White
Black

5/bundle
5131001700
5131006700

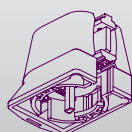
FMS PLUS L-PULLEY



To create a double overlap-
ping track system in combina-
tion with only one motor.
White

1/box
5133011101

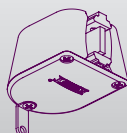
FMS PLUS MOTOR PULLEY



Connects motor with FMS
PLUS track
White
Black

1/box
5133011000
5133016000

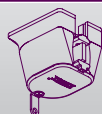
FMS PLUS RETURN PULLEY



Reverses the FMS Plus belt in
the FMS Plus track
White
Black

1/box
5133011100
5133016100

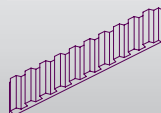
FMS PLUS MOTOR PULLEY UPSIDE DOWN



Can be used to place the
motor upside down
White

1/box
5133011003

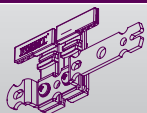
FMS PLUS TRANSPORT BELT



Toothed belt to be installed
inside FMS Plus track

100 mtr/roll
5135501000

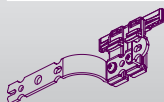
FMS PLUS MASTER CARRIER UNDERLAP



Arm is reversible
White
Black

10/box
5135801000
5135806000

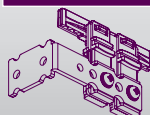
FMS PLUS MASTER CARRIER OVERLAP



Arm is reversible
White
Black

10/box
5135901000
5135906000

FMS PLUS MASTER CARRIER EASY FLEX L&R



White

10/box
5135901010

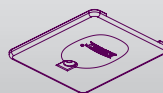
ECONOMY CARRIER



Can turn in the track
White
Black

100/box
2510601000
2510606000

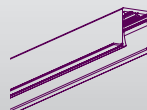
FMS PLUS RECESS COVERPLATE UPSIDE DOWN



Coverplate for recess; motor
pulley
White

1/box
5133011004

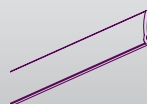
FMS PLUS RECESS PROFILE



Pre-drilled
Combine with fixing strip
White

7 mtr (23')
5002001701

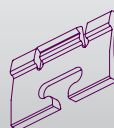
FMS PLUS RECESS PROFILE FIXING STRIP



Combine with profile
White

6 mtr (20')
5131001600

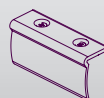
FMS PLUS PROFILE WEDGE



To fix the track into the profile

10/box
5131001100

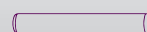
FMS PLUS / MTS TRACK BRIDGE



To join two pieces of track;
6,5 cm White
28 cm White

10/box
4518701000
4518601000

FMS PLUS / KS TRACK CONNECTORPIN



Stainless steel, 2 x 20 mm
For a firm seamless con-
nection

50/box
9900000012

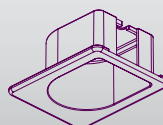
FMS PLUS RECESS TRACK



Preshaped 90 degrees curve
for FMS plus track

1 piece
51311011790

FMS PLUS RECESS COVERPLATE



Coverplate for recess; motor
and return pulley
White

1/box
5133011104

FOREST
DRAPERY HARDWARE