

JUST A GENTLE TOUCH...



**REMOTE  
CONTROL**



**SILENT  
TOUCH**

**OFFICE AUTOMATION**



**HOTEL AUTOMATION**



**HOME AUTOMATION**



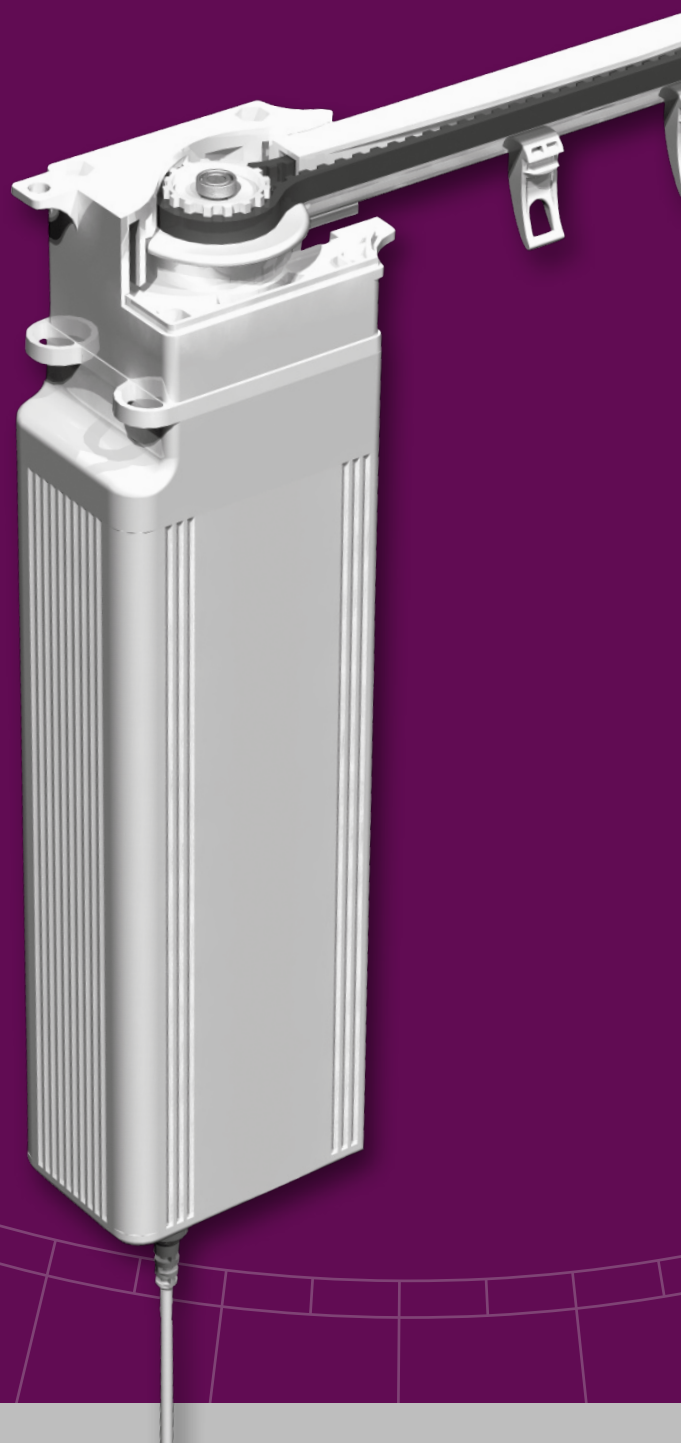
## PRODUCT INFORMATION

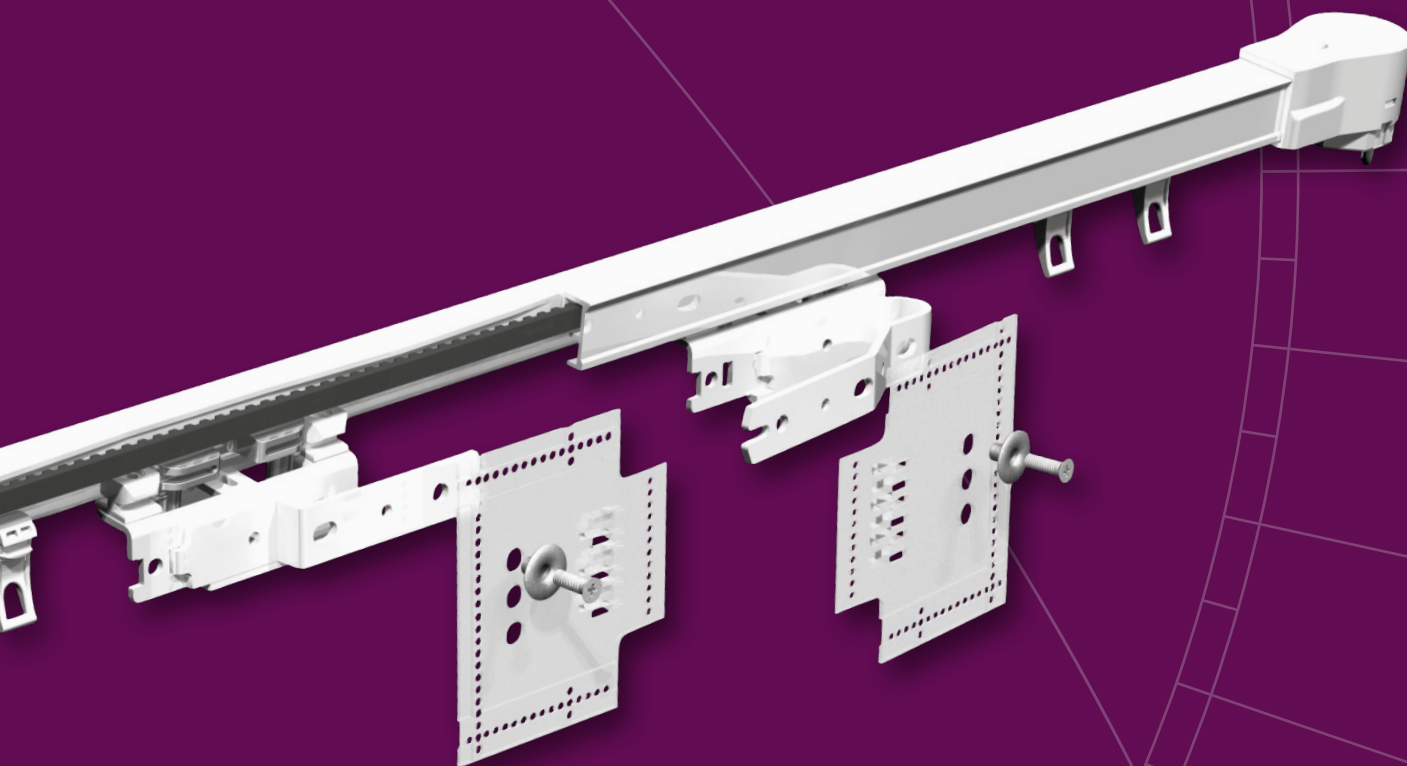
The Forest Shuttle motorized system is available in three types, Shuttle M, Shuttle L and Shuttle S. All three motors offer these functions:

- Touch Impulse Technology, gently pulling the curtain by hand will activate the motor (standard feature);
- Integrated Emergency Control with automatic de-clutch in case of power failure, to ensure a manual operation of the curtains (standard feature);
- Modular motor, different modules can be attached for various control options: Radio Frequency, Wall Switch, Infrared, Domotics, Building/Hotel Automation, Serial Communication, Z-wave, etc.;
- Ultra Silent motor;
- Slow start and slow stop;
- Full automatic setting of the limits;
- Programming of intermediate positions possible;
- Touch Impulse Sensitivity adjustable; high sensitivity, low sensitivity, and off;
- Stack-back position programmable to every desired setting;
- FMS track and components available in white and black;
- Clickable off-set carriers for a straight heading of the curtain; rolling carriers and FES Easyfold carriers also available;
- Kevlar based drive belt;
- All KS brackets applicable;
- Motors can also be used on MRS Motorized Rod System;
- Tandem motor application possible as well.



**BOTTOM VIEW**  
FOREST SHUTTLE

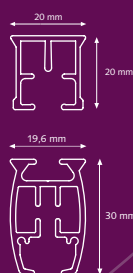




## SPECIFICATIONS TRACK

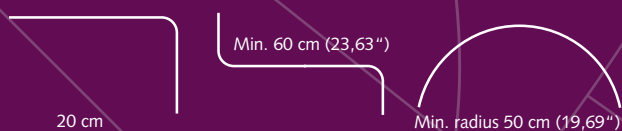
FMS Track: • Weight 303 gr /mtr  
(3,25 ounce/ft.)  
• Aluminium Extrusion  
• Size 20 x 20 mm  
(0.8 x 0.8 inch)

FMS Plus: • Weight 500 gr/mtr.  
(5,36 ounce/ft.)  
• Aluminium Extrusion  
• Size 19,6x30 mm  
(0.8x1.2 Inch)



## BENDING / CURVING

The motor can be used in a track with one or two bends of 90 degrees. The track can be bended and reversed bended with a radius of 20 cm (8"). Continuous curving can be done with the Electric Powered Bender.



## CONTROL OPTIONS

### BUILDING AUTOMATION



Designed for use in any building automation system through the integrated dry contact port in the motor. 230V direct control is possible with the optional Dry Contact Relay. The BUS ports allow for individual and group controls of the motors.

### TOUCH IMPULSE TECHNOLOGY



A gentle pull will activate the curtain thanks to the smart Touch Impulse Technology of the motor. Standard feature.

### INTEGRATED EMERGENCY CONTROL



In case of power failure, the curtain can still be moved manually. Standard feature.

### MULTI DIAMOND REMOTE CONTROL



Available in white and black, can be used to control all forest motorized window decoration systems. With 6 individually channels or in 1 group.

### Z-WAVE DOMOTICA CONTROL



Wireless Domotics communication with data feedback and automatic routing in a mesh-network environment. Open protocol with "Scene Control". Works with the Forest Touch App for IOS and Android devices.

## FOREST PARTNERSHIPS



[www.amx.com](http://www.amx.com)  
In Concert Partner.



[www.knx.nl](http://www.knx.nl)  
KNX partner



[www.z-wave.com](http://www.z-wave.com)  
Z Wave alliance partner



[www.crestron.com](http://www.crestron.com)  
I2P partner

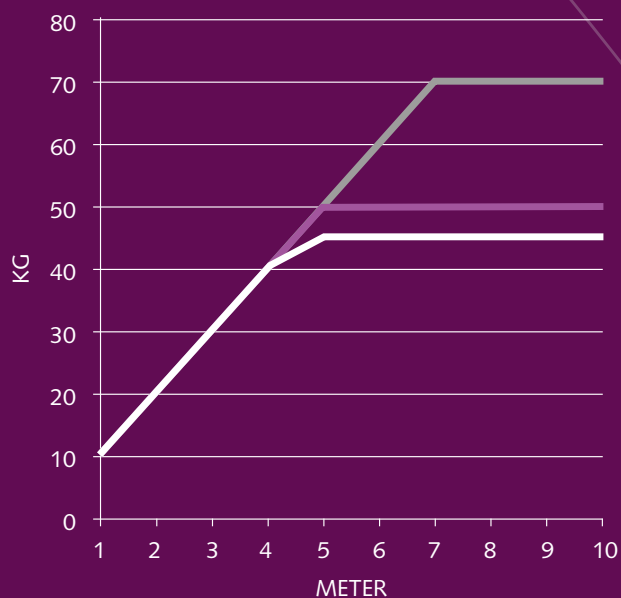


[www.smart-homes.nl](http://www.smart-homes.nl)  
Smart homes partner

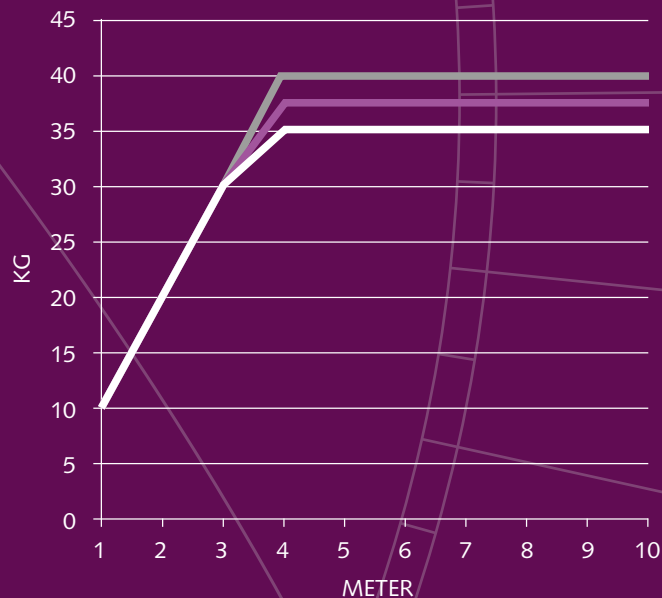
Detailed schedules on how to program the Forest Shuttle are included with the motor and can be found on our website [www.forestgroup.com](http://www.forestgroup.com)

The Forest® Shuttle is compatible with many other Building of Automation systems, thanks to its modular construction. A competitive advantage over the motorized drapery systems in the world!

SHUTTLE M LOAD TABLE:



SHUTTLE S/L LOAD TABLE:



- Straight
- One Bend/Curve
- Two Bends

	Shuttle M	Shuttle S	Shuttle L
Voltage Shuttle	24Vdc	24Vdc	100 - 240V~ 50 - 60Hz
RF Multi Receiver	Internal, optional	Internal	Internal
Power Supply	External, 100-240Vac – 1,5A - 50-60Hz; Output 24Vdc - 2,7A	External, 100 - 240Vac - 0,8A - 50 - 60Hz; Output 24Vdc - 2,5A	Internal
Max. power	65W	40W	40W
Torque:	1,5 Nm	1,0 Nm	1,0 Nm
Speed:	15 cm/s	14 – 17cm/s	14 – 17cm/s
Noise Level:	< 40 dB(A)	< 40 dB(A)	< 40 dB(A)
Max. curtain weight	70 kg	40 kg	40 kg
Dimensions Motor:	7 x 5 x 23 cm	7 x 5 x 20 cm	7 x 5 x 28 cm
Dimensions Power Supply	50 x 110 x 30 mm	50 x 80 x 30 mm	-
Protection degree	IP20	IP20	IP20
Max. running time	175 sec (in one direction)	240 sec (in one direction)	240 sec. (in one direction)
Certification & Marking:	CE/FCC	CE/FCC	CE/FCC



## FOREST SHUTTLE 'S' & 'L'

### FOREST SHUTTLE 'L' 230 VOLT AC



Motor with internal RF Multi Receiver and integrated 24 V power Supply 110 – 240 V. Touch Impulse and Emergency Control as standard.

*Dimensions* 7 x 5 x 28 cm 1/box

White 5232000001

Black 5232006001

Silver 5232003001

With Z-wave receiver built-in 5232000002

### FOREST SHUTTLE 'S' 24 VOLT DC



Motor with internal RF Multi Receiver, Touch Impulse and Emergency Control as standard. 24 V Power supply 110 – 240 V to be ordered separately. 1/box

*Dimensions* 7 x 5 x 20 cm

### POWER CABLE 4M



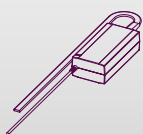
EU white 5201001104

black 5201006104

UK White 5201001134

1/box

### FOREST ADAPTOR FOR SHUTTLE 'S'



Forest adaptor with support bracket for Shuttle 'S' motor 1/box

Plugs available in versions: 1/box

EU 5201001101

UK 5201001131

AUS 5201001141

USA 5201001121

## FOREST SHUTTLE 'M'

### FOREST SHUTTLE MOTOR 24 VOLT DC



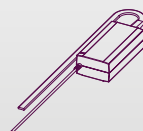
Strongest motor with standard Touch Impulse System and Emergency Control and with internal RF Multi Receiver.

*Dimensions:* 7x5x23 cm (2.76x1.97x9.25") 1/box

White 5232000003

Black 5232006003

### FOREST ADAPTOR



Forest adaptor set complete 1/box

(eu) incl. wall bracket 5201002002

(uk) incl. wall bracket 5201002004

(eu) incl. wall bracket black 5201006002

(usa) incl. wall bracket 5201002005

### SHUTTLE MULTI RECEIVER CLICK ON



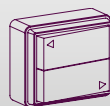
To be used in case of Z-wave motor that also has to be controlled with Diamond remote control. 5201001362 1/each

### FOREST Z-WAVE REMOTE CONTROL



7-channel remote control with scene setting options. 5201001700 1/box

### FOREST PULSE WALL SWITCH

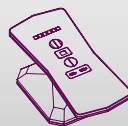


*Dimensions:*  
6,5 x 5,5 x 2,7 cm  
(2.56 x 2.17 x 1.06")

5201001900

1/box

### MULTI DIAMOND REMOTE CONTROL



5 + 1 channel remote control.

1/each

White 5201091460

Black 5201096460

### MULTI WIRELESS WALL SWITCH



2-channel wall switch.

*Dimension:* 8,5 x 8,5 x 1 cm.

1/each

White 5201001480

Black 5201006480

### FOREST MULTI WIRELESS SWITCH WITH TIMER



15 channels

1/each

White 5201001481

Black 5201006481

### SHUTTLE INFRARED MODULE



Cordlength is 60cm.

5201001260

1/box

### SHUTTLE INFRARED REMOTE CONTROL

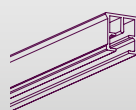


6 channel infrared remote control.

5201001250

1/box

### FMS TRACK



Aluminium extrusion, powder coated black, lubricated. Available 10/bundle

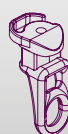
lengths: 5,80 m (19') 5101001580

7 m (23') 5101001700

7 m (23'), black 5101006700

7 m (23'), silver 5101003700

### FMS SILENT CARRIER



"Clickable", offset, made of UV-resistant plastic. Can be clicked into the track after installation. 250/box

White 2510101000-S

Black 2510106000-S

Silver 2510103000-S

### FMS/CCS/MRS WHEEL CARRIER



The wheel carrier goes smoothly over a splice.

5210101002

100/box

### FMS TRACK JOINER



Used to make a solid connection between two pieces of track.

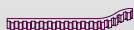
10/box

White 2518401000

Black 2518406000

Silver 2518403000

## FMS TRANSPORT BELT



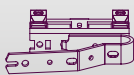
Toothed belt, to be installed inside the FMS Track. 5105501000  
100 mtr/roll

## FMS MASTER CARRIER UNDERLAP



Multifunctional - arm is reversible for Click on stiffner 15/box  
White 5215801010  
Black 5215806010  
Silver 5215803010

## FMS MASTER CARRIER OVERLAP



Multifunctional - arm is reversible for Click on stiffner 15/box  
White 5215901010  
Black 5215906010  
Silver 5215903010

## UNDERLAP SINGLE R/L



Multifunctional - arm is reversible - will slide trough curves. 15/box  
White 3016001000  
Black 3016006000

## PROLONGED OVERLAP CLICK ON



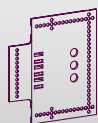
15 cm long. 15/box  
White 95000001010  
Black 95000006010

## EASYFLEX CURVED ARM



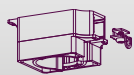
White 15/box  
Black 95000001010  
Silver 95000006010  
95000003010

## CLICK ON STIFFNER



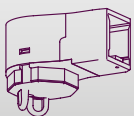
Recommended to attach to the FMS Master Carriers, stiffner to be stitched into the curtain. 5116001001  
15/box

## FMS MOTOR PULLEY



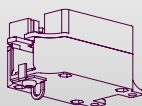
Connects motor with FMS Track. 1/box  
White 5103011000  
Black 5103016000  
Silver 5103013000

## FMS RETURN PULLEY



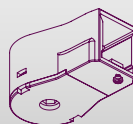
Reverses the FMS transport belt in the FMS Track. 1/box  
White 5103011100  
Black 5103016100  
Silver 5103013100

## FMS MOTOR PULLEY UPSIDE DOWN



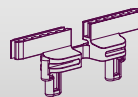
Can be used to place the motor upside down on the FMS track. 5103011003  
1/box

## FMS RETURN PULLEY EASYFLEX



For single-closing curtains. 1/box  
White 5103011102  
Black 5103016102  
Silver 5103013102

## FMS CONNECTOR



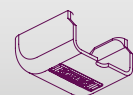
To fix the FMS Master Carrier onto the FMS transport belt. 50/box  
White 5103011500  
Black 5103016500  
Silver 5103013500

## SMART KLIKK CEILING BRACKET



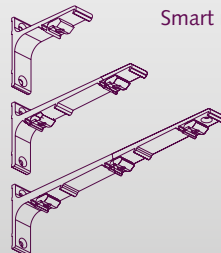
"Klicks" onto track, powder coated. 100/box  
White 1018201000  
Included Cover Cap 1018201001  
Black 1018206000  
Silver 1018203000

## COVER FOR SK CEILING BRACKET



Fits on Smart Klick Wall and Ceiling bracket. 10192..000  
100/box  
Colours: 01, 03, 05, 06.

## ALUMINIUM WALL BRACKET



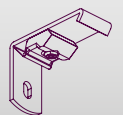
Smart Klick, powder coated. 1020301...  
7,5 cm single (3") 20/box  
10 cm single (4") 20/box  
15 cm double (6") 15/box  
20 cm double (8") 15/box  
25 cm triple (10") 10/box  
Colours: 01, 03, 06.

## FSS METAL BRACKET



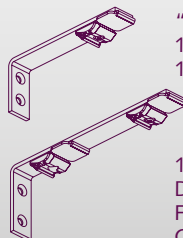
Strong bracket to fit the Forest Skylight System to the wall or ceiling. 7160001000  
100/box

## SMART KLIKK WALL BRACKET



3,5 cm (1,4") and 6 cm (2,4"). "Klicks" onto track, powder coated. One screw attachment. For light weight use only. Colours: 01, 03, 06. 50/box  
10202..035  
10202..060

## SMART KLIKK WALL BRACKET



"Klicks" onto track. 10202... mm  
10 cm (4"), 12,5 cm (5"), 20/box  
15 cm (6"), 20 cm (8"), 15/box  
25 cm (10") and 30 cm (12") 10/box  
with support.  
15 cm (6"), 20 cm (8")  
Double track. 10206... mm  
For light weight use only. 15/box  
Colours: 01, 03, 06.

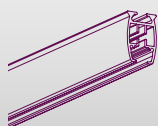
## FOREST LUBRICANT



To lubricate components during assembly. 1/box  
5109010000

## FMS PLUS

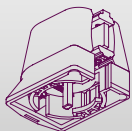
### FMS PLUS TRACK



Aluminium extrusion  
Available length : 7 m (23')  
White  
Black

5/bundle  
5131001700  
5131006700

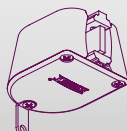
### FMS PLUS MOTOR PULLEY



Connects motor with FMS  
PLUS track  
White  
Black

1/box  
5133011000  
5133016000

### FMS PLUS RETURN PULLEY



Reverses the FMS Plus belt in  
the FMS Plus track  
White  
Black

1/box  
5133011100  
5133016100

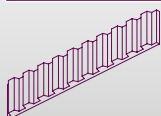
### FMS PLUS MOTOR PULLEY UPSIDE DOWN



Can be used to place the  
motor upside down  
White

1/box  
5133011003

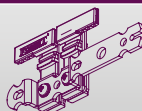
### FMS PLUS TRANSPORT BELT



Toothed belt to be installed  
inside FMS Plus track

100 mtr/roll  
5135501000

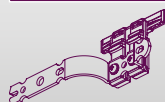
### FMS PLUS MASTER CARRIER UNDERLAP



Arm is reversible  
White  
Black

10/box  
5135801000  
5135806000

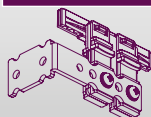
### FMS PLUS MASTER CARRIER OVERLAP



Arm is reversible  
White  
Black

10/box  
5135901000  
5135906000

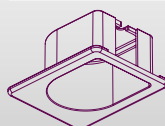
### FMS PLUS MASTER CARRIER EASY FLEX L&R



White

10/box  
5135901010

### FMS PLUS RECESS COVERPLATE



Coverplate for recess; motor  
and return pulley  
White

1/box  
5133011104

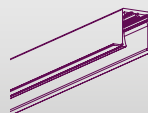
### FMS PLUS RECESS COVERPLATE UPSIDE DOWN



Coverplate for recess; motor  
pulley  
White

1/box  
5133011004

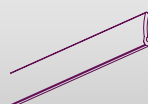
### FMS PLUS RECESS PROFILE



Pre-drilled  
Combine with fixing strip  
White

7 mtr (23')  
5002001701

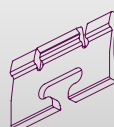
### FMS PLUS RECESS PROFILE FIXING STRIP



Combine with profile  
White

6 mtr (20')  
5131001600

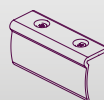
### FMS PLUS PROFILE WEDGE



To fix the track into the profile

10/box  
5131001100

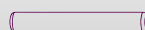
### FMS PLUS / MTS TRACK BRIDGE



To join two pieces of track;  
6,5 cm White  
28 cm White

10/box  
4518701000  
4518601000

### FMS PLUS / KS TRACK CONNECTORPIN



Stainless steel, 2 x 20 mm  
For a firm seamless con-  
nection

50/box  
9900000012

### CONTRACT BENDING TOOL



For CS/CCS/FMS/CRS/MTS

1/each  
2560000000

**CS/CCS/FMS Bending  
Wheel** Excluding strips.

1/each  
2561000000

**FMS Plus Bending set**  
Including strips.

1/each  
5131000000

**FOREST**  
— DRAPERY HARDWARE —

