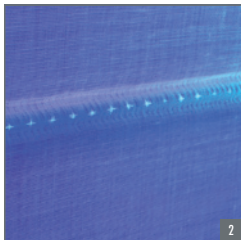
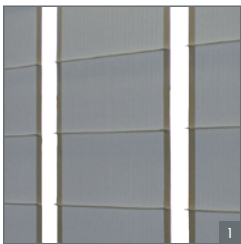


ATS-2300

Automatic tunnel stitching machine

- Equipped with Dürkopp Adler single needle post bed machine with reversible top driven roller
- Sewing width 4,5 m, height on request
- Equipped with synchronous servo motors
- Tunnel depth between 10 and 40 mm
- Lifting beam with pneumatic clamps
- Self supporting stand
- 15" Touch screen
- Interactive communication with PLS-2300 (programmable laser cutting and marking system) and databases
- Visual basic programming
- Production capacity up to 80 blinds in 8 hours
- Optional UV marking for simultaneous marking of rings or for stitch-on tunnels and ring tape



1. Equal multiples

2. UV marking for tunnels/rings/tape etc.

Eisenkolb has developed into the market leader in the curtain processing industry. As a provider of total solutions, we offer you an unprecedented expertise and supporting service based on technically superior machines and materials. That is how Eisenkolb contributes to the optimization of the primary processes in the textile related industries. Customer-oriented, starting from feeling for textile.